



A4 multi-function device delivers productivity while remaining compact

The imageRUNNER ADVANCE DX C359i delivers outstanding colour output while maintaining small footprint. Paired with comprehensive security capabilities, the device will seamlessly integrate into any modern workplace.

WORKFLOW EFFICIENCY

- Intuitive touchscreen provides users with smartphone-like usability, making navigation a breeze.
- Intelligent feeder allows effortless, rapid scanning with features like multi-sheet feed detection and skip blank originals.
- My ADVANCE enables a unique, personal experience tailored to meet each user's workflow needs. Settings, such as display language, initial log-in screen, and accessibility options, can be synchronised across multiple devices for consistency.
- Canon's MEAP platform provides process optimisation, by integrating with a range of powerful document, capture and output management solutions.
- Scalable support for mobile where users can connect directly to the device with Direct Access Point. Capture, scan or print documents easily with the Canon Print Business app.

COST MANAGEMENT

- The ability to apply print policies, monitor output, and restrict usage by user helps reduce unnecessary printing, resulting in lower total document cost.
- Tight integration with output management solutions, such as uniFLOW, provides the ability to carry out detailed tracking, reporting, and cost analysis.
- Quality and reliability, combined with remote diagnostics and assistance, can help reduce costs by minimising downtime and time spent by IT.
- Consistent user operation combined with remote and centralised fleet management can help simplify IT management of devices and entire fleets.

QUALITY AND RELIABILITY

- V² (Vivid & Vibrant) imaging technology ensures high quality printouts that impress time after time.
- Supreme transferability of toner and stable reproduction of colours onto a wide range of media, even at large volumes.
- State-of-the-art imaging technologies and toner allow for consistently striking images with 1,200 dpi print resolution.
- Canon's device management tools give you a centralised point of control across your entire fleet, upgrade devices remotely, check device and consumables status and capture meter readings.
- Standard PCL and Adobe PostScript print driver allows seamless integration with enterprise applications.
- Remote diagnostics allow timely, accurate and effective resolution.
- Intuitive user maintenance videos and status notifications available to help achieve maximum uptime and keep supplies replenished.

SUSTAINABILITY

- CS Toner (consistently stable) provides print quality even for high volume print jobs.
- Minimise paper waste by holding jobs at the device with Force Hold Print. Choose to preview your print jobs or even change print settings at the device to achieve the desired results at the first time of printing.
- Consumes as little as 0.8W in sleep mode.

SECURITY

- Control who has access to the device with different authentication methods such as picture login, department ID, user authentication and card access.
- Ensure information privacy and security across your network with IPsec, port filtering capabilities, and SSL technology.
- Enhance document confidentiality with encrypted secure print, secure print, secure watermark, encrypted PDF and device signature PDF.
- System verification at startup and McAfee® Embedded Control ensures device security, protecting against malware and tampering of firmware.
- Integrate with third-party solutions for complete monitoring protection.

MACHINE SPECIFICATION

MAIN UNIT

Type
A4 Colour Laser Multifunctional

Core Function
Print, Copy, Scan, Send, Store and Optional Fax

Processor
Canon Dual Custom Processor (Shared)

Control Panel
10.1" TFT LCD WSVGA Colour Touch panel

Memory
RAM Main CPU: 2GB
Image Processing CPU: 1GB + 0.5GB

Storage
(SSD) 256GB

Interface Connection
Network
Standard : 1000Base-T/100Base-TX/10Base-T
Optional : Wireless LAN (IEEE 802.11 b/g/n)

Others
Standard : USB 2.0 x1 (Host), USB 3.0 x1 (Host),
USB 2.0 x1 (Device)
Optional : Serial Interface, Copy Control Interface

Paper Supply Capacity (A4, 80gsm)
Standard : 650 sheets (1 x 550-sheet cassettes,
1 x 100-sheets multi-purpose tray)
Maximum : 2,300 sheets
(with Cassette Feeding Unit-AK1)

Paper Output Capacity (A4, 80gsm)
Standard : 250 Sheets
Maximum : 500 Sheets (with Staple Finisher-Z1)

Finishing Capabilities
Collate, Group, Offset, Staple
* Finishing capabilities vary depending on the options connected

Supported Media Types
Multi-purpose tray:
Thin, Plain, Heavy, Recycled, Colour, Transparency,
Envelope, Pre-punched, Bond, Postcard, Labels
Paper Cassette:
Thin, Plain, Heavy, Recycled, Colour, Pre-punched, Bond,
Envelope

Supported Media Sizes
Multi-purpose tray:
Standard size : A4, A5, A5R, A6, B5,
Custom size : 98.0 x 148.0 mm to 216.0 x 355.6 mm
Envelopes : COM10 No.10, Monarch, DL, ISO-C5
Custom size : 98.0 x 148.0 mm to 216.0 x 355.6 mm

Paper Cassette:
Standard size : A4, A5, A5R, A6, B5
Custom Size : 98.0 x 190.5 mm to 216.0 x 355.6 mm
Envelopes : COM10 No.10, Monarch, DL, ISO-C5

Supported Media Weights
Multi-purpose tray : 60 to 220 gsm
Paper Cassette : 60 to 163 gsm
Duplex : 60 to 163 gsm

Warm-up Time
Quick Startup Mode : 4 Seconds or Less^{*1}
From Sleep Mode : 10 Seconds or Less
From Power On : 10 Seconds or Less^{*2}

*1 Time from device power-on to when the copy icon appears and is enabled to operate on the touch panel display.
*2 Time from device power-on, until copy ready (not print reservation)

Dimensions (W x D x H) 519 mm x 658 mm x 638 mm

Installation Space (W x D)
Basic: 852 x 908 mm (with Multi-purpose tray extended + paper cassette opened)
Fully Configured: 1,407 x 908 mm (with Staple Finisher-Z1 + Multi-purpose tray extended + paper cassette opened)

Weight Approx. 49kg including toner

Printing Specifications

Print Speed (BW and CL, 1 sided)
iR-ADV DX C3591 : up to 35 ppm (A4)
up to 26 ppm (A5R)
up to 61 ppm (A5)
up to 23 ppm (A6)

Print Resolution (dpi) 1,200 x 600

Page Description Languages
Standard: UFR II, PCL6, Adobe PostScript 3

Direct Print
Supported file types: TIFF, JPEG, PDF, EPS and XPS

Printing from mobile and cloud applications
AirPrint, Mopria, Canon PRINT Business, uniFLOW Online and Universal Print

Fonts
PCL fonts: 93 Roman, 10 Bitmap fonts, 2 OCR fonts,
Andalé Mono WT/J/K/S/T^{*1} (Japanese, Korean,
Simplified and Traditional Chinese), Barcode fonts^{*2}
PS fonts: 136 Roman

*1 Requires optional PCL INTERNATIONAL FONT SET-A1
*2 Requires optional BARCODE PRINTING KIT-D1

Operating System

UFR II: Windows@10/Windows@11/Windows@Server2012/
Windows@Server2012 R2/Windows@Server2016/
Windows@Server2019/Windows@Server2022/
macOS (10.13 or later)

PCL: Windows@10/Windows@11/Windows@Server2012/
Windows@Server2012 R2/Windows@Server2016/
Windows@Server2019/Windows@Server2022

PS: Windows@10/Windows@11/Windows@Server2012/
Windows@Server2012 R2/Windows@Server2016/
Windows@Server2019/Windows@Server2022/
macOS (10.13 or later)

PPD: Windows@10/11, Mac OS X(10.13 or later)

Copy Specifications

Copy Speed (BW and CL, 1 sided)
iR-ADV DX C3591 : up to 35 ppm (A4)
up to 26 ppm (A5R)
up to 61 ppm (A5)
up to 23 ppm (A6)

First-Copy-Out Time Approx. 5.1/6.9 seconds or less
(A4, BW/CL)

Copy Resolution (dpi) 600 x 600, 300 x 600

Multiple Copies Up to 999 sheets

Copy Density Automatic or Manual (9 Levels)

Magnification
Variable zoom: 25% to 400% (1% Increments)
Preset reduction/enlargement: 25%, 50%, 70%, 81%, 86%,
100%(1:1), 115%, 122%, 141%, 200%, 400%

Scan Specifications

Standard Type
Single-pass Duplexing Automatic Document Feeder^{*}
[2-sided to 2-sided (Automatic)]
^{*} Detect Feeder Multi Sheet Feed is supported.

Document Feeder Paper Capacity (80gsm)
Up to 100 Sheets

Acceptable originals and weights
Platen: Sheet, Book and 3-Dimensional Objects
Document Feeder media weights:
1-sided scanning: 42 to 128 gsm (BW), 64 to 128gsm (CL)
2-sided scanning: 50 to 128 gsm (BW), 64 to 128gsm (CL)

Note: Business card: 80 to 220 gsm
Originals with width narrower than A6: 50 to 128 gsm (except business card)

Supported Media Sizes

Platen scanning size: up to 216.0 x 355.6 mm
Document Feeder media size: A4, A5R, A6, B5
Custom size: 48.0 x 128.0 mm to 216.0 x 355.6 mm
Business card: 48.0 x 85.0 mm to 55.0 x 91.0 mm

Scan Speed (A4, BW and CL)

Send (300 x 300 dpi): Automatic Colour Select "OFF":
1-sided Scanning : 95 ipm
2-sided Scanning : 190 ipm
Automatic Colour Select "ON":
1-sided Scanning : 50 ipm
2-sided Scanning : 100 ipm

Copy: Scan Speed priority (300 x 600 dpi):
1-sided Scanning : 50 ipm
2-sided Scanning : 100 ipm
Image Quality priority (600 x 600 dpi):
1-sided Scanning : 30 ipm
2-sided Scanning : 50 ipm

Scan Resolution (dpi)

Scan for Copy : 600 x 600
Scan for Send : (Push) 600 x 600 (SMB/FTP/WebDAV/
IFAX), (Pull) 600 x 600
Scan for Fax : 600 x 600

Pull Scan Spec

Colour Network ScanGear2. For both TWAIN and WIA
Supported OS: Windows@10/Windows@11/
Windows@Server2012/Windows@Server2012 R2
/Windows@Server2016/Windows@Server2019/
Windows@Server2022

Send Specifications

Destination

Standard: E-mail/Internet FAX (SMTP), FTP, SMB,
WebDAV, Mail Box
Optional: Super G3 FAX, IP Fax

Address Book

LDAP (2,000)/Local (1,600)/One-touch (200)

Send Resolution (dpi)

Push : up to 600 x 600
Pull : up to 600 x 600

Communication Protocol

E-mail : FTP (TCP/IP), SMB 3.1.1 (TCP/IP), WebDAV
E-mail/I-Fax : SMTP, POP3

File Format

Standard: TIFF, JPEG, PDF (Compact, Searchable, Apply
policy, Optimize for Web, PDF A/1-b, Trace &
Smooth, Encrypted, Device Signature, User
Signature), XPS (Compact, Searchable, Device
Signature, User Signature), Office Open XML
(PowerPoint, Word)

Fax Specifications

Maximum Number of Connection Lines 1

Modem Speed Super G3 : 33.6 kbps
G3 : 14.4 kbps

Compression Method MH, MR, MMR, JBIG

Resolution (dpi) 400x400 (Ultra Fine),
200x400 (Super Fine),
200x200 (Fine),
200x100 (Normal)

Sending/Receiving Size

Sending : A4, A5*, A6*, B5*

Receiving : A4, A5, B5

* Sent as A4

FAX Memory Up to 30,000 pages (2,000 jobs)

Speed Dials Max. 200

Group Dials/Destinations Max. 199 dials

Sequential Broadcast Max. 256 addresses

Memory Backup Yes

Store Specifications

Mail Box (Number supported)

100 User Inboxes, 1 Memory RX Inbox,
50 Confidential Fax Inboxes
Maximum 10,000 Pages (2,000 jobs) Stored

Advanced Box

Communication Protocol: SMB or WebDAV
Supported Client PC: Windows® 10/11
Concurrent Connections (Max.): SMB: 64, WebDAV: 3

Advanced Box available disc space
Approx. 16GB (Standard HDD)

Security Specifications

Authentication and Access Control

User Authentication: Picture Login, Picture and PIN Login,
Card Login, Username and Password Login, Function Level
Login, Mobile Login)

Department ID Authentication: Department ID and PIN
Login, Function Level Login
uniFLOW Online Express: PIN Login, Picture Login, Picture
and PIN Login, Card Login, Card and PIN Login, Username
and Password Login, Department ID and PIN Login,
Function Level Login
Access Management System: Access Control

Document Security

Print Security: Secure Print, Encrypted Secure Print, Forced
Hold Printing, uniFLOW Secure Print*

Receive Data Security: Confidential Fax In-box Forwarding
Received Documents Automatically

Scan Security: Encrypted PDF, Device Signature PDF/
XPS, User Signature PDF/XPS, Adobe LiveCycle Rights
Management ES2.5 Integration

BOX Security: Mail Box Password Protected, Advanced Box
Access Control

Send Data Security: Setting for requesting password input
per transmission, Restricted E-mail/File send functions,
Confirming FAX number, Allow/Restrict Fax Driver
Transmissions, Allow/Restrict Sending from History, S/MIME
Support

Document Tracking: Secure Watermark

*Requires uniFLOW Online/uniFLOW

Network Security

TLS 1.3, IPsec, IEEE802.1X authentication, SNMP V3.0,
Firewall Functionality (IP/MAC Address Filtering), Dual
Network Support (Wired LAN/Wireless LAN, Wired LAN/
Wired LAN), Disabling Unused Functions (Enabling/
Disabling Protocols/Applications, Enabling/Disabling
Remote UI, Enabling/Disabling USB Interface), G3 FAX
separation from LAN, USB Port separation from LAN,
Prohibit the execution of files stored in Advanced Box in the
MFP, Scan and Send -Virus Concerns for E-mail Reception

Device Security

Protecting SSD Data (SSD Data Encryption (FIPS140-2
Validated), SSD Data Overwrite Erase, SSD Lock), Standard
SSD Initialize, Trusted Platform Module (TPM), Job Log
Conceal Function, Checking MFP Software Integrity
(Verify System at Startup, Runtime Intrusion Detection),
Common Criteria Certification (IEEE2600.2/HCD-PP)

Device Management and Auditing

Administrator Password, Digital Certificate And Key
Management, Audit Log, Cooperating with External
Security Audit System (Security Information and Event
Management), Image Data Logging, Security Policy Setting

Environment Specifications

Operating Environment

Temperature: 10 to 30 °C
Humidity : 20 to 80 % RH (Relative Humidity)

Power Requirements

Power Source: 220-240 V, 50/60 Hz, 3.9 A

Power Consumption

Maximum : 1,500 W
Sleep mode : Approx. 0.8 W*

* 0.8W sleep mode is not available in all circumstances due to
certain settings.

Consumables

Toner NPG-76 Toner BK/C/M/Y

Toner Yield (Estimated Yield @5% Coverage)
NPG-76 Toner BK: 23,000 pages
NPG-76 Toner C/M/Y: 18,000 pages

Software and Printer Management

Tracking and reporting
uniFLOW Online Express

Remote Management Tools

iW Enterprise Management Console
eMaintenance
Content Delivery System

Scanning Software

Color Network ScanGear 2

Optimisation Tools

Canon Driver Configuration Tool

Platform

MEAP (Multifunctional Embedded Application Platform)

Document Publishing

IW DESKTOP

Paper Supply Options

Cassette Module-AE1

Paper Capacity : 550 Sheets (80gsm)
Paper Type : Thin, Plain, Heavy, Colour, Recycled,
Pre-punched, Bond
Paper Size : A4, A5R, B5
Custom Size : 98.0 x 190.5 mm to 216.0 x 355.6mm
Paper Weight : 60 to 163 gsm
Power Source : From the Main Unit
Dimensions : 511 mm x 508 mm x 159 mm
(W x D x H)
Weight : Approx. 10 kg

Cassette Feeding Unit-AJ1

Paper Capacity : 550 Sheets (80gsm)
Paper Type : Thin, Plain, Heavy, Colour, Recycled,
Pre-punched, Bond
Paper Size : A4, A5R, B5
Custom Size : 98.0 x 190.5 mm to 216.0 x 355.6mm
Paper Weight : 60 to 163 gsm
Power Source : From the Main Unit
Dimensions : 511 mm x 508 mm x 425 mm
(W x D x H)
Weight : Approx. 16 kg

Cassette Feeding Unit-AK1

Paper Capacity : 550 Sheets (80gsm) x 3 cassettes
Paper Type : Thin, Plain, Heavy, Color, Recycled,
Pre-punched, Bond
Paper Size : A4, A5R, B5
Custom Size : 98.0 x 190.5 mm to 216.0 x 355.6mm
Paper Weight : 60 to 163 gsm
Power Source : From the Main Unit
Dimensions : 511 mm x 508 mm x 425 mm
(W x D x H)
Weight : Approx. 19 kg

Output Options*

Staple Finisher-Z1

Tray Capacity(80gsm): A4, A5, A5R, A6, B5 (500 Sheets)
Paper Weight : 60 to 220 gsm
Staple Position : Corner
Staple Capacity (A4, B5): 30 Sheets (60 to 105 gsm)
Power Source : From the Main Unit
Dimensions : 555 x 459 x 301 mm (Unit size)
(W x D x H)
Weight : Approx. 14 kg

* Paper capacity may vary with different paper type/size.

System and Controller Options

Print Accessories

PCL INTERNATIONAL FONT SET-A1
PCL ASIAN FONT SET-A1

Barcode Printing

BARCODE PRINTING KIT-D1

FAX Accessories

SUPER G3 FAX BOARD-AT1
REMOTE FAX KIT-A1
IP FAX EXPANSION KIT-B1

Interface Accessories

WIRELESS LAN BOARD-D1
COPY CONTROL INTERFACE KIT-A1
SERIAL INTERFACE KIT-K3

Other Options

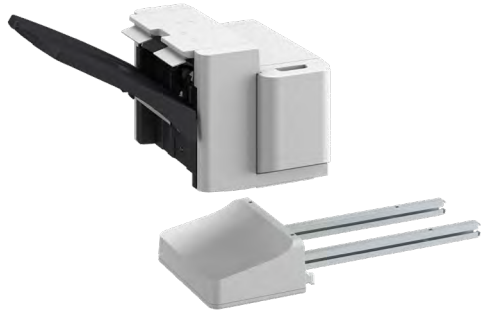
Accessibility Accessories
ADF ACCESS HANDLE-A1

Consumables

STAPLE-P1

For full specifications, please refer to the specification
table on your local Canon web site.

MAIN CONFIGURATION OPTIONS



STAPLE FINISHER - Z1

- 1-tray, 500 -sheet capacity
- Corner stapling up to 30 sheets (80 gsm)



CASSETTE FEEDING UNIT-AJ1

- Supports up to A4
- Media weight 60-163 gsm
- 550 sheets (80 gsm)
- Floor standing



CASSETTE FEEDING UNIT-AK1

- Supports up to A4
- Media weight 60-163 gsm
- 3 x 550 sheets (80 gsm)
- Floor standing



CASSETTE MODULE-AE1

- Supports up to A4
- Media weight 60-163 gsm
- 550 sheets (80 gsm)
- Desktop



Adobe PostScript

Partner/Dealer Stamp

To arrange for a demonstration, simply contact our office below.

**SOUTH & SOUTHEAST ASIA
REGIONAL HEADQUARTERS**

Canon Singapore Pte. Ltd. | 1 Fusionopolis Place #14-10 Galaxis Singapore 138522
Tel: 65-6799 8888 | Fax: 65-6799-8882 | <https://asia.canon/> | <https://sg.canon/>

This document is for general information only and contents are subject to change without notice. Errors and omissions excepted. Weights and dimensions are approximates. Options, name and availability may vary by regions. Nothing in this document should be construed as a warranty. We expressly disclaim any liability or contractual obligations in connection with this document. Trademarks belong to their respective owners.

Canon, imageRUNNER ADVANCE, MEAP, eMaintenance, iW and Business Can Be Simple are trademarks of Canon Inc. and/or its affiliates. "MEAP" is a trademark of CANON Inc., referring to an "application platform" for Canon multifunction and single function printers. Other names may be the trademarks of their respective owners. uniFLOW is an independent party software distributed by Canon Singapore Pte Ltd.

Adobe, LiveCycle, PostScript, and the PostScript logo are either registered trademarks or trademarks of Adobe in the United States and/or other countries.

2023 Canon Singapore Pte. Ltd.
All rights reserved. Printed in Singapore.