

 **imageFORMULA**
DR-M140

Canon

Delighting You Always

Versatile Scanning in An Ultra-Compact Package

Scan business cards and embossed plastic cards in addition to standard A4/LTR and A3 size documents with the ultra compact DR-M140



COLOR
40
PPM

B/W, GRAY
40
PPM

Business *can* be simple

Find out more at www.canon-asia.com

DESIGNED FOR MAXIMUM ACCESSIBILITY AND FLEXIBILITY

Use the U-turn document path and control panel to conveniently perform all operations necessary for basic scanning tasks from the front of the scanner. Switch to the straight path to scan embossed cards and delicate documents. The DR-M140 delivers outstanding user-friendliness and versatility in a remarkably compact body.

DFR (Double Feed Release) button

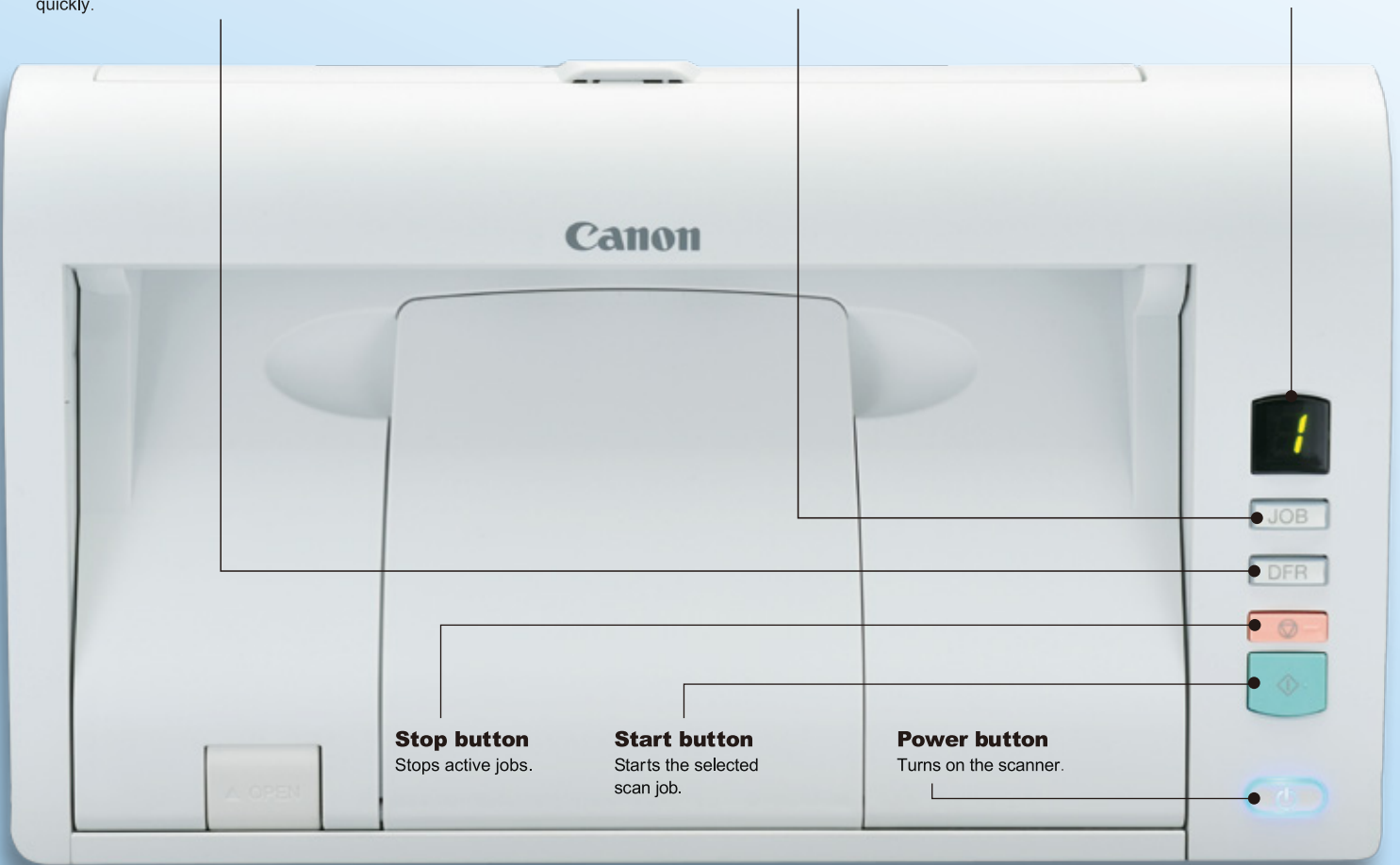
Lights up when a document double feed is detected. When a document that includes sticky notes or pasted photos is detected as double-fed, press this button to allow the document to pass and resume scanning quickly.

Job select button

Selects a registered job. The selected job number appears in the Job No. indicator.

Job No. indicator

Displays the number of the currently selected job, in addition to display errors and other information.



Stop button
Stops active jobs.

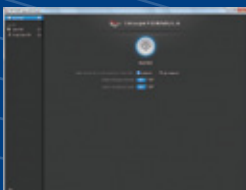
Start button
Starts the selected scan job.

Power button
Turns on the scanner.

Bundled Software

CaptureOnTouch

The dedicated software supplied with DR-Series scanners. CaptureOnTouch, has been redesigned with a newly streamlined interface for even smoother scanning operations.



Programmable scan jobs

Up to nine routine scan tasks can be registered, which can be accessed directly from the DR-M140's operating panel. The LED display shows the current selected job number (1 to 9), and the job select button is used to scroll through them for easy push button access to frequently-used scan functions and settings.

CapturePerfect

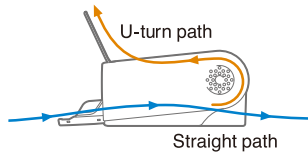
CapturePerfect is Canon's own scanning application that makes it easy to get great scans straight out of the box. With a user-friendly interface, the software provides a wide selection of file-saving formats and file distribution options, such as searchable and encrypted PDF, Scan to Mail, Scan to Presentation, and more.



SMALL BUT VERSATILE

U-turn/straight path options

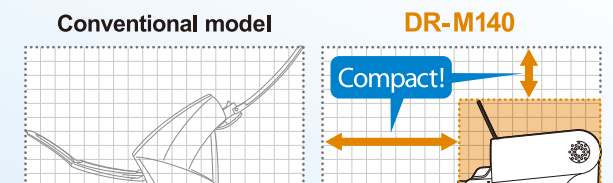
Feed and eject documents using only the space in front of the scanner with the U-turn path, or use the straight path to scan cards, thick documents, and other documents sensitive to bending. Switching between the document paths based on document type is quick and easy.



Compact and user friendly

The scanner's compact body saves valuable desk space and fits easily on countertops and other narrow spaces.

Full front side operability, including the ability to feed and eject documents from the front of the scanner, offers the ultimate user-friendly scanning.



Card scanning

You can scan plain plastic cards and embossed cards* (e.g., credit cards) alike, and even scan mixed document batches that contain both cards and paper documents.

* Up to three plain cards can be scanned at one time. Embossed cards must be scanned one at a time.

Easy Maintenance

Almost all operations can be performed from the front of the scanner.

The front panels open wide for easy access to replaceable parts and jammed paper.

Consumable parts such as the feed roller unit and retard roller are simple and easy to replace.



FAST, HIGH-QUALITY SCANNING

Rapid scanning

An improved CMOS contact image sensor unit enables the DR-M140's fast 40 ppm / 80 ipm scanning. Color documents can be scanned just as quickly as in B&W, and double-sided documents are scanned in one pass.

| | Simplex | | Duplex | |
|----------------|----------------|-------|----------------|-------|
| | B/W, Grayscale | Color | B/W, Grayscale | Color |
| 200 dpi | 40 | 40 | 80 | 80 |
| 300 dpi | 40 | 40 | 80 | 80 |

Reliable document feeding

Canon's reliable page separation mechanism provides smooth feeding of a wide variety of document sizes and weights.

Features such as Ultrasonic Double Feed Detection and Rapid Recovery further ensure dependability by making sure each and every page of a batch is scanned.

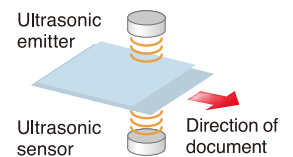


IMAGE PROCESSING

Automatic Color Detection

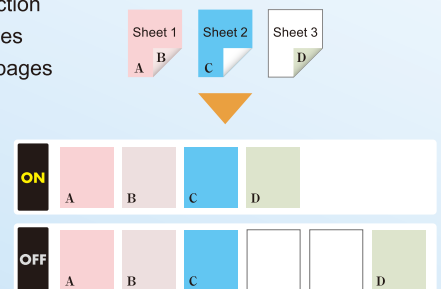
This function automatically determines which documents of a mixed batch should be saved in color, grayscale or B&W, so it's no longer necessary to separate documents prior to scanning.

Auto Page Size Detection

Save the time and trouble of sorting batches by paper size. This function automatically detects the size of each fed document and ensures properly sized images for each page.

Skip Blank Page

Useful for scanning batches that include single- and double-sided documents, this function automatically removes unnecessary blank pages from the image file.



eCopy PDF Pro Office

eCopy PDF Pro Office instantly creates 100% industry-standard, universally viewable PDF files, and converts static PDF documents into editable files. eCopy PDF Pro Office enables the flexibility of a universal document format for higher productivity and seamless information exchange.



Kofax VirtualReScan Basic

The leading image processing software, Kofax VRS Basic, improves readability for multi-size documents of varying degrees of quality. Automatically straighten skewed pages without character degradation, optimize a document's brightness and contrast levels, and eliminate background noise and speckling.



DR-M140 Specifications

| | | |
|---|--|---|
| Type | Desktop sheetfed scanner | |
| Scanning document size | Plain paper | Width: 50.8 mm to 216 mm (2" to 8.5") Length: 54 mm to 356 mm (2.12" to 14") |
| | Business card | 50.8 mm x 85 mm (2.00" x 3.35") or larger |
| | Card | 54 mm x 86 mm (2.12" x 3.37") (ISO standard) |
| | Long document | Up to 3,000 mm (118.1") long (up to 2,700 mm (106.3") on 600dpi) |
| Scanning document thickness | Plain paper | Straight path: 27 to 255 g/m ² (7 to 68 lb bond) 0.04 mm to 0.3 mm (0.00157" to 0.0118") U-turn path: 27 to 128 g/m ² (7 to 34 lb bond) 0.04 mm to 0.15 mm (0.00157" to 0.0075") |
| | Business card | 128 g/m ² to 380 g/m ² (34 to 80 lb bond) , 0.15 mm to 0.45 mm (0.0075" to 0.0177") Orientation: Vertical feeding only |
| | Card | 0.76 mm (0.03") or less (1.4 mm (0.55") or less for embossed cards) Eject method: Straight path only Orientation: Vertical or horizontal feeding (only vertical for embossed cards) Loading capacity: 3 cards (non-embossed), 1 card (embossed) |
| Feeding capacity | Up to 50 sheets of 80 g/m ² or 10 mm stack (including curls) | |
| Scanning sensor | Contact image sensor | |
| Light source | LED | |
| Scanning side | Simplex/duplex | |
| Scanning modes | Black and White, Error Diffusion, 256-level Grayscale, Advanced Text Enhancement, Advanced Text Enhancement II, 24-bit Color | |
| Scanning resolution | 150 x 150dpi/200 x 200dpi/300 x 300dpi/400 x 400dpi/600 x 600dpi | |
| Scanning speed ¹⁾ | B&W, Grayscale | Simplex: 200dpi 40 pages/min. 300dpi 40 pages/min. |
| | | Duplex: 200dpi 80 images/min. 300dpi 80 images/min. |
| | | 24-bit color |
| | | Simplex: 200dpi 40 pages/min. 300dpi 40 pages/min. |
| | | Duplex: 200dpi 80 images/min. 300dpi 80 images/min. |
| | | |
| Interface | Hi-Speed USB 2.0 | |
| Other functions | Folio scanning, Ultrasonic double feed detection, Double feed Release | |
| External dimensions with trays closed (W x D x H) | 313 mm (12.32") (W) x 181 mm (7.13") (D) x 93 mm (3.66") (H) | |
| Weight (without AC adapter) | Approximately 2.6 kg (5.51 lb) | |
| Power requirements | AC100 to 240 V (50/60Hz) | |
| Power consumption | Scanning: maximum 25 W | |
| | In the sleep mode: maximum 1.9 W With power switch OFF: maximum 0.5 W | |
| Noise | Not more than 56 dB | |
| Operating environment | Temperature: 10°C to 32.5°C (50°F to 90.5°F) | |
| | Humidity: 20% to 80% RH | |

1) Actual scanning speed may vary depending on your system configuration and PC.
Specifications are subject to change without notice.

Microsoft, Windows, Windows Vista, PowerPoint and SharePoint are either registered trademarks or trademarks of Microsoft Corporation in the United States and/or other countries.

Adobe, the Adobe logo, Acrobat, the Adobe PDF logo, and Adobe Reader are either registered trademarks or trademarks of Adobe Systems Incorporated in the United States and/or other countries.

Kofax, the Kofax logo, and other Kofax marks are registered trademarks or trademarks of Kofax, Inc. in the United States and other countries, and used under authority from Kofax.

ENERGY STAR and the ENERGY STAR mark are registered U.S. trademarks. Other company names and product names appearing in this brochure are the registered trademarks and/or trademarks of their respective owners.



DEALER'S STAMP

Canon's Sales and Subsidiaries & Business Partners

SINGAPORE

Canon Singapore Pte Ltd
1 Harbourfront Avenue #04-01
Keppel Bay Tower
Singapore 098632
Tel: (65) 6799 8888
Fax: (65) 6799 8882
www.canon-asia.com
www.canon.com.sg

BANGLADESH

Flora Limited
Adamjee Court Annex-2, 4th Fl.
119-120, Motijheel Commercial Area
Dhaka-1000, Bangladesh
Tel: (880) 2 7162742 46 Ext-225
Fax: (880) 2 9550030
www.floralimited.com

J.A.N. Associates Ltd
House 25, Road 5, Dhanmondi R/A,
Dhaka-1205, Bangladesh
Tel: (880) 2 8611444 / 9660601 /
9664101 / 8124941
Fax: (880) 2 8610410
jan@bangla.net
jan-mkt@global-bd.net

BRUNEI

Interhouse Company
P.O. Box 423, Seri Complex BA1779,
Bandar Seri Begawan BF1320
No. 5-7, Bunut Jaya Complex
Spg. 574, Km 7 1/4, Jalan Tutong
Negara Brunei Darussalam
Tel: (673) 2 653001
Fax: (673) 2 653003
www.ihc.com.bn

CAMBODIA

Royal Cambodia Co Ltd
#437 Preah Monivong Blvd
Phnom Penh
Kingdom of Cambodia
Tel: (855) 23 428 955
Fax: (855) 23 722 961
www.royalgroup.com.kh
rccanlon@royalgroup.com.kh

HONG KONG

Canon Hongkong Co., Ltd.
19/F, The Metropolis Tower,
10 Metropolis Drive,
Hungghom, Kowloon, Hong Kong
Tel: (852) 3191 2388
Fax: (852) 2369 3800
www.canon.com.hk

INDIA

Canon India Pvt Ltd.
2nd Floor, Tower A & B
Cyber Greens, DLF Phase III
Gurugram - 122002 Haryana, India
Tel: (91) 124 416 0000
Fax: (91) 124 416 0011
www.canon.co.in

INDONESIA

P. T. Datascrip
Kawasan Niaga Selatan Blok B-15
Bandar Kemayoran
Jakarta 10610 Indonesia
Tel: (62) 21 6544515
Fax: (62) 21 6544811 to 13
www.datascrip.com

MALAYSIA

Canon Marketing (Malaysia) Sdn Bhd
Block D, Peremba Square,
Saujana Resort Section U2,
40150 Shah Alam,
Selangor Darul Ehsan, Malaysia
Tel: (60) 3 7844 6000 / 7845 0055
Fax: (60) 3 7844 6196 / 6198
www.canon.com.my

MALDIVES

SIMDI Office Automation /
SIMDI Company Pvt Ltd
G.Faith, Majeedhee Magu, 20-139,
Male', Maldives
Tel: (960) 333 4421
Fax: (960) 333 4424
www.simdi.com
ramieze@simdi.com

MYANMAR

Myanmar Golden Rock International
Co., Ltd
FJV Commercial Centre
Level 6, No. 422-426
Strand Road Botataung Township
Yangon, Myanmar
Tel: (95) 1 202092 to 96
Fax: (95) 1 202079
sales@mgr.com.mm

NEPAL

International Electronics Concern
Pvt Ltd
Kha 14 1st Floor
Haratithawan Putalisadak
Ramshah Path, Kathmandu,
P.O. Box 12588
Tel: (977) 1 4421911
Fax: (977) 1 4421909

PAKISTAN

Shirazi Trading Co (Pvt) Ltd
8th Floor, Adamjee House,
I.I. Chundrigar Road,
Karachi, Pakistan
Tel: (92) 21 32417659 / 32417737
Fax: (92) 21 32417747 / 32420417 /
32420418
www.shirazitrading.com.pk

PHILIPPINES

Canon Marketing (Philippines), Inc.
Ground Floor Commerce and Industry
Plaza., Campus Ave, cor. Park Ave.,
McKinley Hill, Fort Bonifacio, Taguig
City
Tel: (632) 884 9000
Fax: (632) 894 4174
www.canon.com.ph

SRI LANKA

Metropolitan Computers (Pvt.) Ltd
85 Braybrooke, Place Colombo 2,
Sri Lanka
Tel: (94) 1 2437797
Fax: (94) 1 2448980
www.metropolitan.lk

THAILAND

Canon Marketing (Thailand) Co. Ltd
9th-10th FL, 179/34-45
Bangkok City Tower
South Sathorn Road
Thungmahamek, Sathorn,
Bangkok 10120
Tel: (66) 2 344 9999
Fax: (66) 2 344 9960
www.canon.co.th
info@canon.co.th

VIETNAM

Canon Singapore Pte Ltd
Ho Chi Minh City Representative
Office
Floor 6, SaiGon Centre Building
65 Le Loi, Ben Nghe Ward, District 1
Ho Chi Minh City, Vietnam
Tel: (84) 8 820 0466
Fax: (84) 8 820 0477
www.canon.com.vn
cvro_eng@canon.com.sg

Hanoi City Representative Office
15 Nguyen Chi Thanh
Hanoi, Vietnam
Tel: (84) 4 771 1677
Fax: (84) 4 771 1678
www.canon.com.vn
cvro_eng@canon.com.sg