

**SOUTH & SOUTHEAST ASIA
REGIONAL HEADQUARTERS**

CANON SINGAPORE PTE. LTD.
1 HarbourFront Avenue #04-01 Keppel Bay Tower
Singapore 098632
Tel: 65-6799 8888 Fax: 65-6799 8882
www.canon-asia.com

CANON OFFICES

HONG KONG:
Canon Hongkong Co. Ltd
Tel: 852-3191-2388
Fax: 852-2369-3800
www.canon.com.hk

INDIA:
Canon India Pvt. Ltd.
Tel: 91-124-4160-000
Fax: 91-124-4160-011
www.canon.co.in

MALAYSIA:
Canon Marketing (Malaysia) Sdn. Bhd.
Tel: 603-7844-6000
Fax: 603-7845-0505
www.canon.com.my

PHILIPPINES:
Canon Marketing (Philippines), Inc.
Tel: 632-884-9000
Fax: 632-894-4174
www.canon.com.ph

SINGAPORE:
Canon Singapore Pte. Ltd.
Tel: 65-6799-8888
Fax: 65-6221-7577
www.canon.com.sg

THAILAND:
Canon Marketing (Thailand) Co. Ltd.
Tel: 66-2-3449-999
Fax: 66-2-3449-967/68
www.canon.co.th

VIETNAM:
Canon Singapore Pte. Ltd.
Ho Chi Minh City Representative Office
& Showroom
Tel: 84-8-8200-466
Fax: 84-8-8200-477
www.canon.com.vn

Hanoi City Representative Office
Tel: 84-4-7711-677
Fax: 84-4-7111-678
www.canon.com.vn

CANON BUSINESS PARTNERS

BANGLADESH:
J.A.N. Associates
Tel: 880-2-8611-444
Fax: 880-2-8610-410

BRUNEI:
Interhouse Company
Tel: 673-2-6530-01
Fax: 673-2-6530-03

CAMBODIA:
i-Click (Cambodia) Pte. Ltd.
Tel: 855-23-9966-38
Fax: 855-23-9966-39

Royal Cambodia Co., Ltd
Tel : 855-23-4289-55
Fax : 855-23-7229-61

INDONESIA:
PT Samafitro
Tel: 62-21-3455-521
Fax: 62-21-3844-271

MALDIVES:
SIMDI
Tel: 960-3334-421
Fax: 960-3334-424

MYANMAR:
Myanmar Golden Rock International Co. Ltd.
Tel: 95-1-2020-92/3/4
Fax: 95-1-2020-79

NEPAL:
International Electronics Concern (P) Ltd.
Tel: 977-1-4421-991
Fax: 977-1-4421-909

PAKISTAN:
MBM International
Tel: 9221-3227-0933
Fax: 9221-3438-6308

SRI LANKA:
Metropolitan Communications Ltd
Tel: 94-11-2437-797
Fax: 94-11-2448-980

imageCLASS
MF3010

MULTI-FUNCTION
MONOCHROME LASER PRINTER
**THE IDEAL PRINT
SOLUTION FOR
THE HOME OFFICE**



Faster First Copy Time
FCOT of 12 sec (A4)

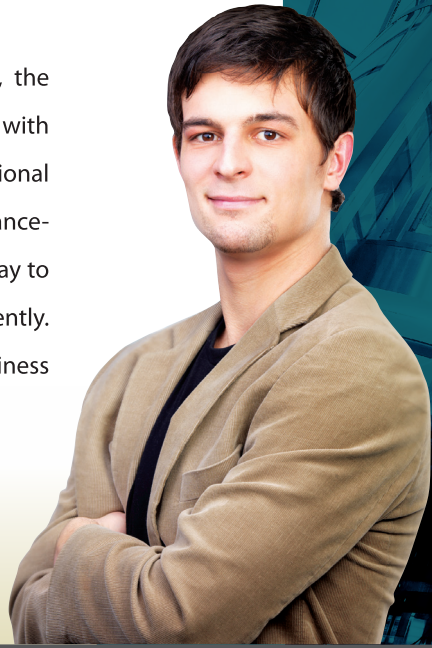
Quick, Time-saving Printing
Up to 18ppm/cpm (A4)

Razor-sharp Laser Quality
Print resolution of up to
1200 x 600dpi

DEALER'S STAMP

MAKING PERFECT BUSINESS SENSE

Ultra-compact, affordable and energy-efficient, the new Canon imageCLASS MF3010 is designed with the needs of small offices in mind. It puts professional output at your fingertips, with quiet, maintenance-free operation and total ease-of-use. Run your day to day office operations cost-effectively and efficiently. With the Canon imageCLASS MF3010, it's a business investment worth making.



HIGH-SPEED PRINTING & COPYING

Race through print and copy jobs at 18ppm/cpm (A4). First Copy Time of less than 12 seconds reduces waiting time for the users.

ULTRA-COMPACT

Measuring 372 x 276 x 254mm (with cassette closed), the small footprint and sleek design offer desktop convenience and space-saving advantages.

SPEEDIER FIRST COPY

A fast First Printout Time (FPOT) of 7.8 sec (A4) lets you outrun the competition by getting ahead of deadlines.

FASTER PROCESSING, FASTER PRINTING



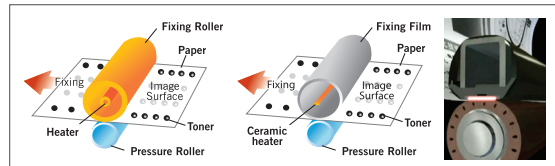
Balancing data-processing demands between the printer and the PC, Canon's UFR II LT™ print language greatly increases processing speeds, regardless of data size or print environment, facilitating high-speed printing.

QUICK WARM-UP TIME

Quick First-Print

Canon's proprietary On-Demand Fixing Technology transfers heat directly to the heating element, reducing warm-up time to the bare minimum.

Traditional Roller Fixing On-Demand Fixing



Heating entire roller surface results in longer warm-up time and higher power consumption

Heat transferred directly to fixing film reduces warm-up time and saves energy

MINIMAL MAINTENANCE

The imageCLASS MF3010 is virtually maintenance free, thanks to Canon's All-in-One Toner Cartridge 325.

Cartridge
325
GENUINE

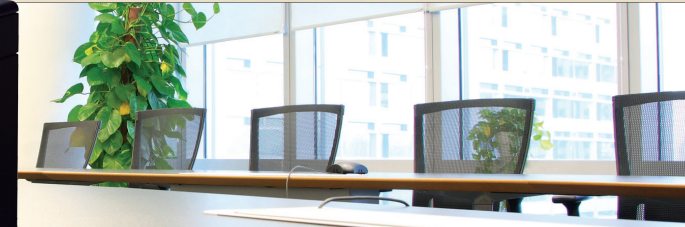
QUALITY TONER ENGINEERING

Adopting a spherical particle shape, MS-Toner achieves improvements in image processing performance, precise character and overall image quality. MS-Toner also improves melting performance, which assists On-Demand Fixing technology through the use of less heat and pressure.



LOW-COST & ENERGY-EFFICIENT

Boasting one of the lowest Typical Energy Consumption (TEC) ratings available, the imageclass MF3010 consumes just 1.4 W in sleep mode.



imageCLASS
MF3010

COPY	
Copy Type	Monochrome Laser
Copy Speed	Up to 18cpm / 19cpm (A4 / LTR)
Copy Resolution	Speed priority mode: 600 x 400dpi, Resolution priority mode: 600 x 600dpi
Halftones	256 levels
Warm-up Time (From Power On)	10 secs or less
Recovery Time (From Sleep Mode)	2 secs or less (Copy) 0.3 secs or less (Print)
First Copy Time (FCOT)	12.0 / 11.8 secs (A4 / LTR)
Paper Source(s)	150-sheet cassette
Paper Weight	60 to 163g/m ² (cassette)
Paper Output	100 sheets (face down)
Zoom	50 - 200% in 10% increments
Copy Size	Platen: Up to A4 / LTR
Copy Features	2 on 1, ID Card Copy
Copy Memory	64MB (Shared)
PRINT	
Printing Type	Monochrome Laser
Print Speed	Up to 18ppm / 19ppm (A4 / LTR)
First Printout Time (FPOT)	7.8 / 7.7 secs (A4 / LTR)
Print Language	UFR II LT
Print Resolution	Up to 600 x 600dpi 1200dpi (equivalent) x 600dpi
Print Memory	64MB (Shared)
SCAN	
Scan Type	CIS
Scan Resolution	Optical: Up to 600 x 600dpi Driver Enhanced: 9600 x 9600dpi
Color Depth	24-bit
Document Size	Platen: Up to A4
Compatibility	TWAIN, WIA
Output File Format	Win: Hi-Compression PDF, Searchable PDF, PDF, JPEG, TIFF, BMP Mac: PDF, JPEG, TIFF, BMP, PNG
Pull Scan	Yes, USB

INTERFACE / SOFTWARE	
Standard Interface(s)	USB 2.0 Hi-Speed
USB Function	Print, Scan
Operating System	Windows XP (32/64-bit) ^{*1} , Windows 2000, Windows Vista (32/64-bit) ^{*1} , Windows 7 (32/64-bit) ^{*1} , Mac OS X ^{*2} , Linux ^{*3}
Utility / Bundled Software	Presto PageManager
GENERAL SPECIFICATIONS	
LCD Display	7 Segment (1 digit) LED
Dimensions (W x D x H)	372 x 276 x 254mm (With the cassette closed) 372 x 371 x 254mm (With the cassette opened)
Weight	7.6kg (without cartridge) 8.2kg (with cartridge)
Power Consumption	Max: 960W During Operation: 450W Standby: 2.5W Sleep: approx. 1.4W
TEC (Typical Electricity Consumption)	0.6 kWh/W
Toner Cartridge ^{*5}	Cartridge 325 ^{**} (1,600 pages) (Bundled cartridge: 700 pages)
Monthly Duty Cycle [†]	8,000 pages

^{*1} Drivers for 64-bit OS can be downloaded from www.canon-asia.com when available
^{*2} Supported OS version is v10.4.9-10.6, latest drivers can be downloaded from www.canon-asia.com when available
^{*3} Linux supports printing only, latest drivers can be downloaded from www.canon-asia.com when available.
^{*4} Cartridge 925 in India
^{*5} Declared yield in accordance with ISO/IEC 19752

[†] Monthly Duty Cycle value provides a means for comparison of product robustness in relation to other Canon Laser All-In-One devices, and does not refer to actual maximum image output per month.