

## User friendly and efficient with low power consumption

The imageRUNNER ADVANCE DX C5800i series offers great usability and high productivity, aimed to support office digital needs. With great performance, the device serves as an ideal interface to connect to various solutions best suited for the business.



### WORKFLOW EFFICIENCY

- Intuitive touchscreen provides users with smartphone-like usability, making navigation a breeze.
- Industry leading Single-Pass document feeder allows up to 270 ipm scanning, supports paper skew prevention and comes with advanced anti-dust/streak measures.
- My ADVANCE enables a unique, personal experience tailored to meet each user's workflow needs. Settings, such as display language, initial log-in screen, and accessibility options, can be synchronised across multiple devices for consistency.
- Canon's MEAP platform provides process optimisation, by integrating with a range of powerful document, capture and output management solutions.
- Scalable support for mobile where users can connect directly to the device with Direct Access Point. Capture, scan or print documents easily with the Canon Print Business app.
- Intelligent features, such as motion sensor technology to wake the device from sleep mode and the ability to remove blank pages when scanning, help maximise productivity.
- Various finishing functions such as Staple-on-Demand, ECO-Staple, saddle stitch, double/corner stapling and foldings are available as an option.

### COST MANAGEMENT

- The ability to apply print policies, monitor output, and restrict usage by user helps reduce unnecessary printing, resulting in lower total document cost.
- Seamless integration with output management solutions, such as uniFLOW or uniFLOW Online Express for detailed tracking, reporting and cost analysis.
- Quality and reliability, combined with remote diagnostics and assistance, can help reduce costs by minimising downtime and time spent by IT.
- Consistent user operation combined with remote and centralised fleet management can help simplify IT management of devices and entire fleets.

## QUALITY AND RELIABILITY

- V<sup>2</sup> (Vivid & Vibrant) imaging technology ensures high quality printouts that impress time after time.
- Supreme transferability of toner and stable reproduction of colours onto a wide range of media, even at large volumes.
- State-of-the-art imaging technologies and toner allow for consistently striking images with 1,200 dpi print resolution.
- Canon's device management tools give you a centralised point of control across your entire fleet, upgrade devices remotely, check device and consumables status and capture meter readings.
- Remote diagnostics allow timely, accurate and effective resolution.
- Standard PCL and optional Adobe PostScript®3™ print driver allows seamless integration with enterprise applications.
- Intuitive user maintenance videos and status notifications available to help achieve maximum uptime and keep supplies replenished.

## SUSTAINABILITY

- Fusing technologies and innovative sleep mode features help lower overall energy consumption.
- Minimise paper wastage by holding jobs at the device with Force Hold Print. Choose to preview your print jobs or even change print settings at the device to achieve the desired results at the first time of printing.
- Consumes as little as 0.8W in sleep mode.

## SECURITY

- Control who has access to the device with different authentication methods such as picture login, department ID, user authentication and card access.
- Ensure information privacy and security across your network with IPsec, port filtering capabilities, and SSL technology.
- Enhance document confidentiality with encrypted secure print, secure print, secure watermark, encrypted PDF and device signature PDF.
- System verification at startup and McAfee® Embedded Control ensures device security, protecting against malware and tampering of firmware.
- Integrate with third-party solutions for complete monitoring protection.

# MACHINE SPECIFICATION

## MAIN UNIT

**Type**  
A3 Colour Laser Multifunctional

**Core Function**  
Print, Copy, Scan, Send, Store and Optional Fax

**Processor**  
Canon Dual Custom Processor (Shared)

**Control Panel**  
10.1" TFT LCD WSVGA Colour Touchpanel

**Memory**  
Standard: 5.0GB RAM

**Storage**  
Standard : (SSD) 256GB  
Optional : (SSD) 256GB, 1TB

**Interface Connection**  
**Network**  
Standard : 1000Base-T/100Base-TX/10Base-T,  
Wireless LAN (IEEE 802.11 b/g/n)  
Optional : NFC, Bluetooth Low Energy

**Others**  
Standard : USB 2.0 x1 (Host) x1, USB 3.0 x1 (Host),  
USB 2.0 x1 (Device)  
Optional : Serial Interface, Copy Control Interface

**Paper Supply Capacity (A4, 80gsm)**  
Standard : 1,200 sheets  
1 x 100-sheet multi-purpose tray  
2 x 550-sheet cassettes  
Maximum : 6,350 sheets (with High Capacity Cassette  
Feeding Unit-C1 & Paper Deck Unit-F1)

**Paper Output Capacity (A4, 80gsm)**  
Standard : 250 Sheets  
Maximum : 3,450 Sheets (with Staple Finisher-AB1 or  
Booklet Finisher-AB1 and 3rd Copy Tray Kit-A1)

**Finishing Capabilities\***  
Standard : Collate, Group  
With Options : Collate, Group, Offset, Staple, Saddle Stitch,  
Hole Punch, Eco Staple, Staple-On-Demand  
\*Finishing capabilities vary depending on the options connected.

**Supported Media Types**  
**Multi-purpose tray:**  
Thin, Plain, Recycled, Color, Heavy, Coated, Tracing, Bond,  
Transparency, Label, Pre-punched, Letterhead, Tab, Envelope  
**Paper Cassette (Upper/Lower):**  
Thin, Plain, Recycled, Color, Heavy, Bond, Transparency, Pre-  
punched, Letterhead, Envelope\*

\* Envelope Feeder Attachment (standard) is required.

**Supported Media Sizes**  
**Multi-purpose tray:**  
Standard size : SRA3, A3, A4, A4R, A5, A5R, A6R, B4, B5, B5R  
Custom size : 98.0 x 139.7 mm to 320.0 x 457.2 mm  
Free size : 98.0 x 139.7 mm to 320.0 x 457.2 mm  
Envelopes : COM 10 No 10, Monarch, ISO-C5, DL  
Envelope custom size : 98.0 x 90.0 mm to 320.0 x 457.2 mm

**Upper Cassette:**  
Standard size : A4, A5, A5R, A6R, B5  
Custom Size : 98.0 x 148.0 mm to 297.0 x 215.9 mm  
Envelopes : COM10 No.10, Monarch, DL, ISO-C5

**Lower Cassette:**  
Standard size : A3, A4, A4R, A5, A5R, A6R, B4, B5, B5R  
Custom size : 98.0 x 148.0 mm to 304.8 x 457.2 mm  
Envelopes : COM10 No.10, Monarch, DL, ISO-C5

**Supported Media Weights**  
Multi-purpose tray : 52 to 300 gsm  
Paper Cassette (Upper/Lower) : 52 to 256 gsm  
Duplex : 52 to 256 gsm

**Warm-up Time**  
Quick Startup Mode : 4 Seconds or less<sup>\*1</sup>  
From Sleep Mode : iR-ADV DX C5870i: 7 Seconds or less  
iR-ADV DX C5860i/C5850i/C5840i  
: 6 Seconds or less  
From Power On : 6 Seconds or less<sup>\*2</sup>

\*1 Time from device power-on to when the copy icon appears and is enabled to operate on the touch panel display.  
\*2 Time from device power-on, until copy ready (not print reservation)

**Dimensions (W x D x H)**  
620 mm x 722 mm x 937 mm

**Installation Space (W x D)**  
Basic: 1,138 x 1,162 mm (Right Cover Open with Multi-  
purpose tray extended + Cassette Drawers Open)  
Fully Configured: 1,866 x 1,162 mm (Staple Finisher-AB1/  
Booklet Finisher-AB1 with the extension tray extended +  
Paper Deck Unit-F1 + Cassette Drawers open)

**Weight\***  
iR-ADV DX C5870i : Approx. 110 kg  
iR-ADV DX C5860i/C5850i : Approx. 107 kg  
iR-ADV DX C5840i : Approx. 106 kg

\*including regular toner

## Printing Specifications

**Print Speed (BW and CL)**  
iR-ADV DX C5870i up to : 70 ppm (A4, A5\*, A5R, A6R\*),  
36 ppm (A3), 42 ppm (A4R)  
iR-ADV DX C5860i up to : 60 ppm (A4, A5\*, A5R, A6R\*),  
32 ppm (A3), 36 ppm (A4R)  
iR-ADV DX C5850i up to : 50 ppm (A4, A5\*, A5R, A6R\*),  
27 ppm (A3), 30 ppm (A4R)  
iR-ADV DX C5840i up to : 40 ppm (A4, A5\*, A5R, A6R\*),  
21 ppm (A3), 24 ppm (A4R)

\*1-sided only

**Print Resolution (dpi)** 1,200 x 1,200

**Page Description Languages**  
Standard: UFR II, PCL6  
Option: Adobe® PostScript®3™

**Direct Print**  
Supported File Types: PDF, EPS, TIFF/JPEG and XPS

**Printing from mobile and cloud**  
AirPrint, Mopria, Canon PRINT Business, and uniFLOW Online

**Fonts**  
PCL fonts: 93 Roman, 10 Bitmap fonts, 2 OCR fonts,  
Andalé Mono WT/J/K/S/T\* (Japanese, Korean,  
Simplified and Traditional Chinese), Barcode fonts<sup>\*2</sup>  
PS fonts: 136 Roman

\*1 Requires optional PCL INTERNATIONAL FONT SET-A1  
\*2 Requires optional BARCODE PRINTING KIT-D1

**Operating System**  
UFR II: Windows® 8.1/10/Server2012/Server2012 R2/  
Server2016/Server2019, Mac OS X (10.11 or later)  
PCL: Windows® 8.1/10/Server2012/Server2012 R2/  
Server2016/Server2019  
PS: Windows® 8.1/10/Server2012/Server2012 R2/  
Server2016/Server2019, Mac OS X (10.11 or later)  
PPD: Windows® 8.1/10, Mac OS X (10.10 or later)

## Copy Specifications

**Copy Speed (BW and CL)**  
iR-ADV DX C5870i up to : 70 ppm (A4, A5\*, A5R, A6R\*),  
36 ppm (A3), 42 ppm (A4R)  
iR-ADV DX C5860i up to : 60 ppm (A4, A5\*, A5R, A6R\*),  
32 ppm (A3), 36 ppm (A4R)  
iR-ADV DX C5850i up to : 50 ppm (A4, A5\*, A5R, A6R\*),  
27 ppm (A3), 30 ppm (A4R)  
iR-ADV DX C5840i up to : 40 ppm (A4, A5\*, A5R, A6R\*),  
21 ppm (A3), 24 ppm (A4R)

\*1-sided only

**First-Copy-Out Time (A4, BW/CL)**  
iR-ADV DX C5870i: Approx. 2.7/3.7 seconds or less  
iR-ADV DX C5860i: Approx. 2.9/4.2 seconds or less  
iR-ADV DX C5850i: Approx. 3.4/4.9 seconds or less  
iR-ADV DX C5840i: Approx. 4.1/6.1 seconds or less

**Copy Resolution (dpi)** 600 x 600

**Multiple Copies** Up to 999 copies

**Copy Density** Automatic or Manual (9 Levels)

**Magnification**  
Variable zoom: 25% to 400% (1% Increments)  
Preset reduction/enlargement: 25%, 50%, 61%, 70%, 81%,  
86%, 100% (1:1), 115%, 122%, 141%, 200%, 400%

## Scan Specifications

**Type**  
Single-pass Duplexing Automatic Document Feeder\*  
[2-sided to 2-sided (Automatic)]  
\* Detect Feeder Multi Sheet Feed is supported.

**Document Feeder Paper Capacity (80gsm)**  
Up to 200 Sheets

**Acceptable Originals and Weights**  
Platen: Sheet, Book and 3-Dimensional Objects  
Document Feeder media weights (BW, CL):  
1-sided scanning: 38 to 220 gsm  
2-sided scanning: 38 to 220 gsm

\*An acceptable weight of A6R or smaller is 50 to 220gsm.

## Supported Media Sizes

Platen scanning size: 297.0 x 431.8 mm  
Document Feeder media size:  
A3, A4, A4R, A5, A5R, A6R, B4, B5, B5R, B6R  
Custom size: 70.0 x 139.7 mm to 304.8 x 431.8 mm

## Scan Speed (A4, BW/CL)

1-sided Scanning (ipm) : 135/135 (300 x 300 dpi, send),  
80/80 (600 x 600 dpi, copy)  
2-sided Scanning (ipm) : 270/270 (300 x 300 dpi, send),  
160/90 (600 x 600 dpi, copy)

## Scan Resolution (dpi)

Scan for Copy : 600 x 600  
Scan for Send : (Push) 600 x 600 (SMB/FTP/WebDAV/  
iFAX), (Pull) 600 x 600  
Scan for Fax : 600 x 600

## Pull Scan Spec

Color Network ScanGear2. For both TWAIN and WIA  
Supported OS: Windows® 8.1/10/Server2012/Server2012  
R2/Server 2016

## Send Specifications

### Destination

Standard: E-mail/Internet FAX (SMTP), SMB 3.0,  
FTP, WebDAV, Mail Box  
Optional: Super G3 FAX, IP Fax

### Address Book

LDAP (2,000)/Local (1,600)/One-touch (200)

### Send Resolution (dpi)

Push : up to 600 x 600  
Pull : up to 600 x 600

### Communication Protocol

File : FTP (TCP/IP), SMB 3.0 (TCP/IP), WebDAV  
E-mail/i-Fax : SMTP, POP3

### File Format

Standard: TIFF, JPEG, PDF (Limited Color, Compact,  
Searchable, Apply policy, Optimize for Web,  
PDF/A-1b, Trace & Smooth, Encrypted, Device  
Signature, User Signature), XPS (Compact,  
Searchable, Device Signature, User Signature),  
Office Open XML (PowerPoint, Word)

## Fax Specifications

### Maximum Number of Connection Lines 4

Modem Speed Super G3 : 33.6 kbps  
G3 : 14.4 kbps

Compression Method MH, MR, MMR, JBIG

Resolution (dpi) 400x400 (Ultra Fine),  
200x400 (Super Fine),  
200x200 (Fine),  
200x100 (Normal)

### Sending/Receiving Size

Sending : A3, A4, A4R, A5<sup>1</sup>, A5R<sup>1</sup>, B4, B5<sup>2</sup>, B5R<sup>1</sup>  
Receiving : A3, A4, A4R, A5R, B4, B5, B5R

<sup>1</sup> Sent as A4 <sup>2</sup> Sent as B4 short

FAX Memory Up to 30,000 pages (2,000 jobs)

Speed Dials Max. 200

Group Dials/Destinations Max. 199 dials

Sequential Broadcast Max. 256 addresses

Memory Backup Yes

## Store Specifications

### Mail Box

100 User Inboxes, 1 Memory RX Inbox,  
50 Confidential Fax Inboxes  
Maximum 10,000 Pages (2,000 jobs) Stored

### Advanced Box

Communication Protocol: SMB or WebDAV  
Supported Client PC: Windows® 8.1/10  
Concurrent Connections (Max.): SMB: 64, WebDAV: 3

### Advanced Box available disc space

Approx. 16GB (Standard)  
Approx. 480GB (with option)

## Security Specifications

### Authentication and Access Control

**User Authentication** (Picture Login, Picture and PIN  
Login, Card Login, Username and Password Login, Function  
Level Login, Mobile Login)

**Department ID Authentication** (Department ID and PIN  
Login, Function Level Login)

**uniFLOW Online Express** (PIN Login, Picture Login, Picture  
and PIN Login, Card Login, Card and PIN Login, Username  
and Password Login, Department ID and PIN Login,  
Function Level Login)

**Access Management System** (Access Control)

### Document Security

**Print Security** (Secure Print, Encrypted Secure Print,  
Forced Hold Printing, uniFLOW Secure Print<sup>\*)</sup>)

**Receive Data Security** (Confidential Fax Inbox Forwarding  
Received Documents Automatically)

**Scan Security** (Encrypted PDF, Device Signature PDF/  
XPS, User Signature PDF/XPS, Adobe LiveCycle® Rights  
Management ES2.5 Integration)

**BOX Security** (Mail Box Password Protected, Advanced  
Box Access Control)

**Send Data Security** (Setting for requesting password  
input per transmission, Restricted E-mail/File send  
functions, Confirming FAX number, Allow/Restrict Fax  
Driver Transmissions, Allow/Restrict Sending from History,  
S/MIME Support)

**Document Tracking** (Secure Watermark)

<sup>\*</sup> Requires uniFLOW Online/uniFLOW

### Network Security

TLS 1.3, IPsec, IEEE802.1X authentication, SNMP V3.0,  
Firewall Functionality (IP/MAC Address Filtering), Dual  
Network Support (Wired LAN/Wireless LAN, Wired LAN/  
Wired LAN), Disabling Unused Functions (Enabling/  
Disabling Protocols/Applications, Enabling/Disabling  
Remote UI, Enabling/Disabling USB Interface), G3 FAX  
separation from LAN, USB Port separation from LAN,  
Prohibit the execution of files stored in Advanced Box in the  
MFP, Scan and Send -Virus Concerns for E-mail Reception

### Device Security

Protecting SSD Data [SSD Data Encryption (FIPS140-2  
Validated), SSD Lock], Standard SSD Initialize, Trusted  
Platform Module (TPM), Job Log Conceal Function,  
Protecting MFD Software Integrity, Checking MFD Software  
Integrity (Verify System at Startup, Runtime Intrusion  
Detection), HCD-PP

### Device Management and Auditing

Administrator Password, Digital Certificate And Key  
Management, Audit Log, Cooperating with External  
Security Audit System (Security Information and Event  
Management), Image Data Logging, Security Policy  
Setting

## Environment Specifications

### Operating Environment

Temperature: 10 to 30 °C  
Humidity: 20 to 80 % RH (Relative Humidity)

### Power Requirements

Power Source: 220-240 V, 50/60 Hz, 6 A

### Power Consumption

Maximum: Approx. 2,000 W (iR-ADV DX C5870i)  
Approx. 1,800 W (iR-ADV DX C5860i/C5850i/  
C5840i)

Copying (with DADF continuous scan): Approx. 943 W<sup>\*1</sup>

Standby: Approx. 53.4W<sup>\*1</sup>

Sleep mode: Approx. 0.8 W<sup>\*2</sup>

<sup>\*1</sup> Reference Value: measured one unit

<sup>\*2</sup> 0.8W is not available in all circumstances due to certain settings.

## Consumables

Toner NPG-83 Toner BK/C/M/Y  
NPG-83L Toner C/M/Y

### Toner Yield (Estimated Yield @5% Coverage)

NPG-83 Toner BK : 71,000 pages

NPG-83 Toner C/M/Y : 60,000 pages

NPG-83L Toner C/M/Y : 26,000 pages

## Software and Printer Management

### Tracking and reporting

Universal Login Manager (ULM)  
uniFLOW Online Express

### Remote Management Tools

iW Management Console  
eMaintenance  
Content Delivery System

### Scanning Software

Network ScanGear

### Optimisation Tools

Canon Driver Configuration Tool

### Platform

MEAP (Multifunctional Embedded Application Platform)

### Document Publishing

iW DESKTOP

## Paper Supply Options

### Cassette Feeding Unit-AQ1

Paper Capacity : 550 Sheets x 2 (80gsm)  
Paper Type : Thin, Plain, Heavy, Color, Recycled,  
Pre-punched, Transparency, Bond,  
Letterhead

Paper Size : A3, A4, A4R, A5, A5R, A6R, B4, B5, B5R

Custom Size : 98.0 x 148.0 mm to 304.8 x 457.2mm

Paper Weight : 52 to 256 gsm

Dimensions : 620 mm x 660 mm x 251 mm

(W x D x H) (attached to the main unit)

Weight : Approx. 22 kg

### High Capacity Cassette Feeding Unit-C1

Paper Capacity : 2,450 sheets (80gsm)

Paper Type : Thin, Plain, Heavy, Color, Recycled,  
Pre-punched, Bond, Letterhead

Paper Size : A4

Paper Weight : 52 to 256 gsm

Power Source : From the Main Unit

Dimensions : 620 mm x 660 mm x 251 mm

(W x D x H) (attached to the main unit)

Weight : Approx. 29 kg

### Paper Deck Unit-F1

Paper Capacity : 2,700 sheets (80gsm)

Paper Type : Thin, Plain, Heavy, Color, Recycled,  
Pre-punched

Paper Size : A4, B5

Paper Weight : 52 to 256 gsm

Power Source : From the Main Unit

Dimensions : 344 mm x 630 mm x 440 mm

(W x D x H) (attached to the main unit)

Weight : Approx. 31 kg

## Hardware Accessories

### Card Readers

IC CARD READER BOX FOR NUMERIC KEYPAD-A1  
COPY CARD READER-F1  
COPY CARD READER ATTACHMENT-B7

### Others

TAB FEEDING ATTACHMENT KIT-F1  
UTILITY TRAY-B1  
BUFFER PASS UNIT-P1  
NUMERIC KEYPAD-A2

## Security Options

### Data Security

250GB SSD-A1  
1TB SSD-A1  
MEMORY MIRRORING KIT-A1

## System and Controller Options

### Print Accessories

PCL INTERNATIONAL FONT SET-A1  
PCL ASIAN FONT SET-A1  
PS PRT KIT-BEIE

### Barcode Printing

BARCODE PRINTING KIT-D1

### EFI-Fiery Based Controller

imagePASS-R1

### EFI-Fiery Based Controller Options

FIERY IMPOSE  
FIERY COMPOSE  
FIERY IMPOSE AND COMPOSE  
HOT FOLDERS LICENSE

### System Accessories

COPY CONTROL INTERFACE KIT-A1  
SERIAL INTERFACE KIT-K3  
CONNECTION KIT-A3 FOR BLUETOOTH LE  
NFC KIT-E2

### FAX Accessories

SUPER G3 FAX BOARD-AX1  
SUPER G3 2ND LINE FAX BOARD-AX1  
SUPER G3 3RD/4TH LINE FAX BOARD-AX1  
REMOTE FAX KIT-A1  
IP FAX EXPANSION KIT-B1

## Other Options

### Accessibility Accessories

ADF ACCESS HANDLE-A1  
VOICE GUIDANCE KIT-G1  
VOICE OPERATION KIT-D1

### Staple Cartridge

STAPLE-P1  
STAPLE CARTRIDGE-Y1

For full specifications, please refer to the specification  
table on your local Canon web site.

# MAIN CONFIGURATION OPTIONS

## BOOKLET FINISHER-AB1

- 2-tray, 3,250-sheet capacity
- Corner and double stapling up to 50 sheets (80gsm)
- Booklet-making up to 20 sheets and non-staple saddle folded capacity up to 3 sheets (A3/A4R)
- Supports ECO-Staple 8 sheets (80gsm) and Staple-on-Demand 50 sheets (80gsm)
- Supports optional external 2/3 and 2/F4 Hole Puncher Unit-D1



## INNER 2 WAY TRAY-M1

- 2-tray, 350-sheet capacity
- Separates copies, prints and faxes
- Adds a second internal output tray



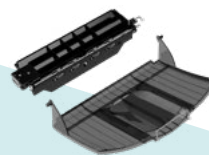
## BUFFER PASS UNIT-P1

- Inner tray, 100-sheet capacity
- Transports paper to external finisher



## INNER FINISHER-L1

- 2-tray, 545-sheet capacity
- Corner and double stapling up to 50 sheets (80gsm)
- Supports ECO-Staple 8 sheets (80gsm) and Staple-on-Demand 40 sheets (80gsm)
- Supports optional Inner 2/3 Hole Puncher-D1 and Inner 2/F4 Hole Puncher-D1



## 3RD COPY TRAY KIT-A1

- 100-sheet capacity

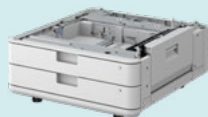


## PAPER DECK UNIT-F1

- Supports A4 and B5
- Media weight 52-256 gsm
- 2,700 sheets (80 gsm)

## STAPLE FINISHER-AB1

- 2-tray, 3,250-sheet capacity
- Corner and double stapling up to 50 sheets (80gsm)
- Supports ECO-Staple 8 sheets (80gsm) and Staple-on-Demand 50 sheets (80gsm)
- Supports optional external 2/3 Hole Puncher unit-D1 and 2/F4 Hole Puncher Unit-D1



## CASSETTE FEEDING UNIT-AQ1

- Supports up to A3
- Media weight 52-256gsm
- 2 x 550 sheets (80gsm)



## HIGH CAPACITY CASSETTE FEEDING UNIT-C1

- Supports A4
- Media weight 52-256gsm
- 2,450 sheets (80gsm)



## imagePASS-R1 (Embedded)

- PDL · PCL/Adobe®PostScript®3™
- MEMORY · 4GB/500GB
- SYSTEM · FS400

- Delivers fast processing speed, outstanding image quality, and time-saving workflow
- Integrates print production workflows with EFI™ management information systems, Web-to-Print systems, and popular prepress workflows for end-to-end automation



V<sup>2</sup> COLOUR



Partner/Dealer Stamp

To arrange for a demonstration, simply contact any of our offices below.

### SOUTH & SOUTHEAST ASIA REGIONAL HEADQUARTERS

Canon Singapore Pte. Ltd. | 1 Fusionopolis Place #15-01 Galaxis Singapore 138522  
Tel: 65-6799 8888 | Fax: 65-6799-8882 | <https://asia.canon/> | <https://sg.canon/>

This document is for general information only and contents are subject to change without notice. Errors and omissions excepted. Weights and dimensions are approximates. Options, name and availability may vary by regions. Nothing in this document should be construed as a warranty. We expressly disclaim any liability or contractual obligations in connection with this document. Trademarks belong to their respective owners.

Canon, imageRUNNER, imageRUNNER ADVANCE, imageCHIP, RAPID Fusing System, MEAP, eMaintenance, iW, Business can be simple and get Smart get genuine are trademarks of Canon Inc. and/or its affiliates. "MEAP" is a trademark of CANON Inc., referring to an "application platform" for Canon multifunction and single function printers. Other names may be the trademarks of their respective owners. uniFLOW, eCopy and Therefore are independent party software distributed by Canon Singapore Pte Ltd.

Adobe, PostScript, PostScript 3 and the PostScript logo are trademarks of Adobe Systems Incorporated

0223W248 @ 2021 Canon Singapore Pte. Ltd.  
All rights reserved. Printed in Singapore.