

EOS

Canon

Delighting You Always

MASTER  
THE  
GAME

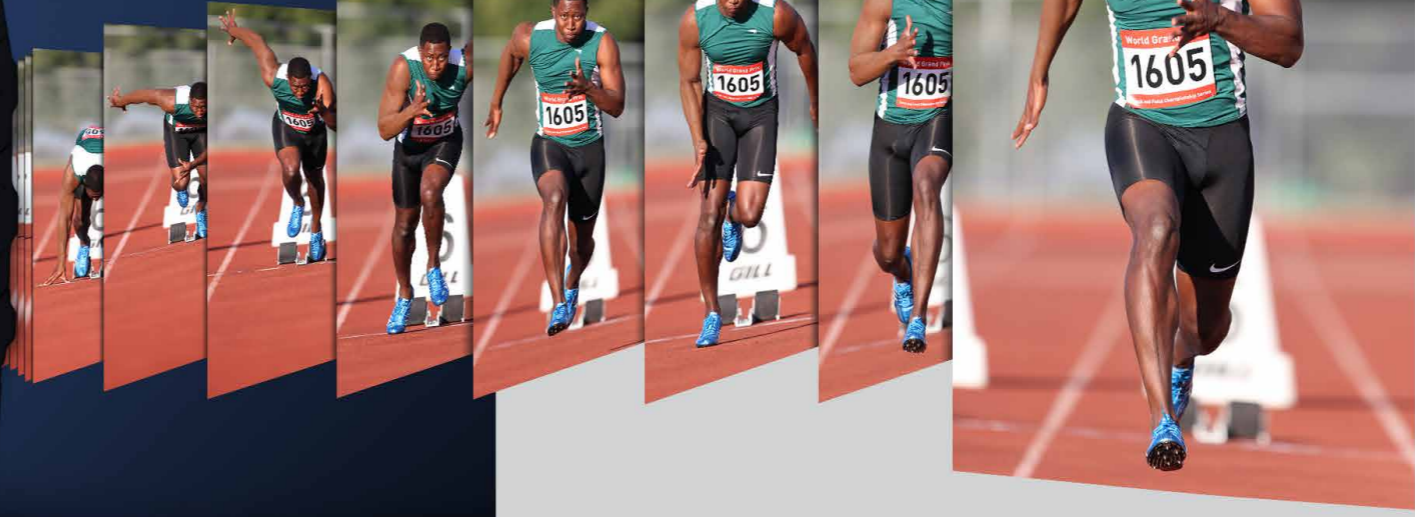
EOS-1D X  
Mark III

FLAGSHIP FULL-FRAME DSLR



# BE THE EXCEPTIONAL GAME CHANGER

Notably distinguished as the epitome of full-frame DSLR cameras for professionals, the Canon EOS-1D series creates a brand-new masterpiece in its finest, class-leading flagship to date. A sturdy and reliable workhorse crafted to perfection for swift response and intuitive focusing, the Canon EOS-1D X Mark III offers superior image quality as well as breathtaking 4K video recording made for the most challenging subjects.



FAST  
POWERFUL  
RELIABLE

## EOS-1D X Mark III

- DIGIC X
- Up to 16 Frames Per Sec
- Up to 20 Frames Per Sec LiveView Mode
- FULL FRAME CMOS
- 20.1 MEGA PIXELS CMOS
- ISO 102400
- 400,000 PIXELS RGB+IR Metering sensor
- 4K 60p
- 120p High Frame Rate HD Movie
- Dual Pixel CMOS AF
- Eye Detection AF
- WiFi CERTIFIED
- GPS
- Dual Card Slots
- MADE IN JAPAN

The EOS-1D X Mark III achieves precise focusing with up to 191 AF points and effortlessly captures decisive moments with up to 20 fps in Live View mode for more than 1000 shots\* (RAW + JPEG) in a single burst. Advanced face tracking and eye detection, even in environment as dark as EV-6<sup>^</sup>, give photographers a huge edge in capturing raw emotion in their story.

Featuring for the first time in EOS history, HDR PQ HEIF 10-bit file recording ensures superb image quality. Top that with a new low-pass filter and clarity compensation, the EOS-1D X Mark III easily meets the highest demands of professionals in the field, from sports journalists to wildlife and commercial photographers.



## FUEL THE THIRST FOR SPEED

### AF TRACKING PRECISION

In viewfinder shooting mode, the EOS-1D X Mark III features the latest AF sensor that supports up to 191 AF points\* (up to 155 cross-type AF points<sup>^</sup>). This allows the EOS-1D X Mark III to maintain focus even in low-contrast and dimly lit shooting conditions up to EV-6<sup>^</sup> where conventional AF systems struggle to grasp. The immense improvement in the AI Servo AF algorithm aids in face and head detection for high-precision subject tracking performance during sporting events that involve dynamic movements.



\* Number of available AF points and cross-type points may vary depending on lens used.  
<sup>^</sup> In Live View Mode (f/1.2, center AF point, room temperature, ISO 100, One-Shot AF). EV-4 via optical viewfinder (center AF point supporting f/2.8, One-Shot AF, room temperature, ISO 100)

### HIGH-SPEED CONTINUOUS SHOOTING

The swift speed of burst shooting enables a higher chance for professional photographers to capture that precise moment when the composition is perfect. The EOS-1D X Mark III fires at an impressive shooting speed of up to 16 fps using the viewfinder, in sync with the newly developed AF/AE system for rapid response on precision autofocus and exposure control in every decisive shot. To fully capitalise on the high frame rate, the EOS-1D X Mark III is equipped with dual slots for the next-generation CFexpress<sup>1</sup> cards. Capable of high-speed data transfer for 5.5K RAW movies at up to 2600 Mbps, these cards greatly increase the number of shots in a single burst to 1000 shots or more\* (JPEG, RAW or RAW + JPEG)

- Up to 16 Frames Per Sec
- Dual Card Slots
- CFexpress B

\* Based on a 325GB CFexpress card (Canon Test Standards) and shooting through the viewfinder.

<sup>1</sup> Canon is an authorized licensee of the CFexpress 2.0™ trademark owned by CompactFlash Association, which may be registered in various jurisdictions.

### LIVE VIEW SHOOTING

The EOS-1D X Mark III captures at up to 20 fps with AF/AE tracking. With a broad AF area divided into 525 segments, precise focusing with the Dual Pixel CMOS AF can be achieved throughout almost the entire frame. 3869 AF positions can be manually selected if fine-tuning of AF is required. Electronic shutter is also available for silent shooting.

- Dual Pixel CMOS AF
- Eye Detection AF
- Up to 20 Frames Per Sec LiveView Mode

## SEIZE BEAUTY IN MOTION

### 4K MOVIE SHOOTING

The EOS-1D X Mark III supports the cinematic aspect ratio standard of 4K 60p UHD/DCI, utilizing the full width of the camera's 35mm full-frame CMOS sensor for immersive wide-angle shooting in outstanding quality. The camera is also capable of capturing 5.5K RAW movies\* while simultaneously recording Canon Log (MP4)\*\* to support development work on movie production. Proven in the Cinema EOS System, the 4:2:2 10-bit Canon Log profile provides users with up to 12 stops of dynamic range, offering rich details with a high degree of freedom in grading. The EOS-1D X Mark III also features a HDMI terminal for seamless 4K data transmission to another display device or an external recorder. Videographers can also achieve slow-motion effects with high-speed movie shooting at 120p/100p in FHD format to dramatise fast-moving subjects such as in sporting events. Be it for filmmaking, commercial video or news reporting, the EOS-1D X Mark III empowers you with top-end image quality and operational flexibility to capture all the raw action in motion at the front line.

- 4K 60p
- 4K Frame Grab
- 120p High Frame Rate HD Movie
- HDMI



\* AF does not function with 5.5K RAW 60p/50p (NTSC/PAL).  
 \*\* Two memory cards are required when recording RAW and Canon Log (MP4) data files simultaneously

# ENGINEERING THE IMPOSSIBLE

## NEW CMOS SENSOR & DIGIC X

Image resolution and edge sharpness have never been more precise with the EOS-1D X Mark III's pursuit for image quality excellence. The EOS-1D X Mark III is powered by the latest DIGIC X imaging processor, boosting performance in all aspects – from resolution to colour reproduction to noise reduction – far beyond those employed in its predecessors. With default ISO speed of up to 102400 (expandable to 50, 204800, 409600 & 819200), the camera is capable of advanced noise reduction, delivering clean and well-defined images even in low-light situations. Combining the DIGIC X imaging processor with an impeccable 20.1-megapixel full-frame CMOS sensor, the camera surpasses every expectation in both high-calibre photo capture as well as pristine 5.5K RAW movie recording.



20.1 MEGA PIXELS CMOS

ISO

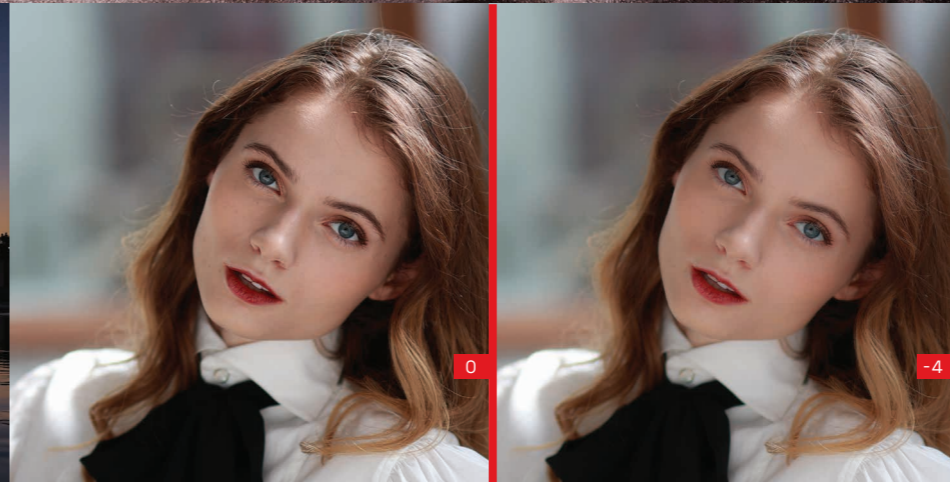
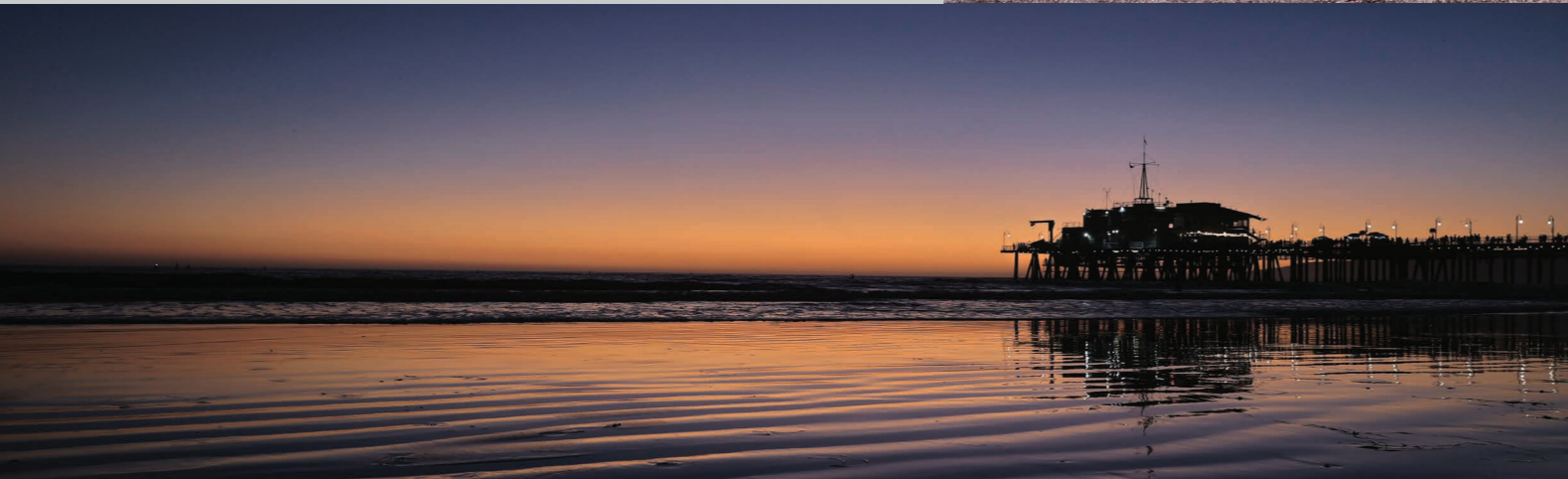
102400  
 HD 25600  
 4K 25600

FULL FRAME CMOS



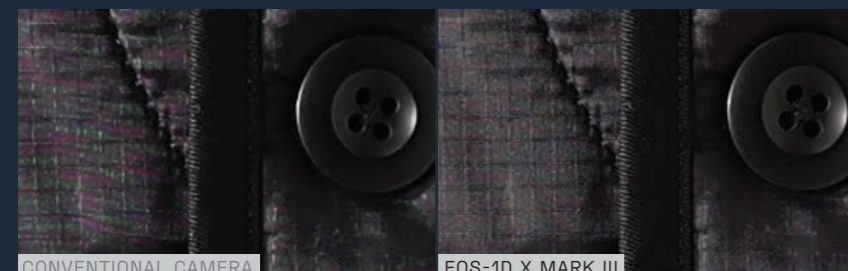
## HDR PQ HEIF 10-BIT RECORDING

The EOS-1D X Mark III is the first EOS DSLR to process image data and record HEIF 10-bit files with HDR PQ, a new gamma curve to maximise dynamic range. This means complex colour and brightness gradations are reproduced with realism. HDR images (HEIF) are converted to standard dynamic range images automatically when viewed on a non-HDR compatible display.



## CLARITY

The EOS-1D X Mark III features "Clarity" as a new image quality adjustment function for adjusting edge contrast. Unlike the existing "Contrast" of Picture Style, this function enables adjustment of contrast (sharpness) around edges while suppressing the loss of detail in highlights and shadows in the overall image. This allows users to increase clarity (+) to enhance a sense of sharpness in low-contrast images, or reduce clarity (-) to maintain a soft appearance on a subject's skin.

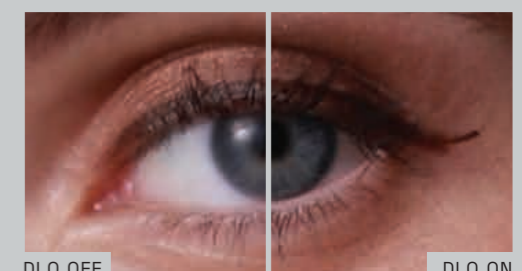


## HIGH DETAIL LOW-PASS FILTER

A new 16-point separation low-pass filter developed for the EOS-1D X Mark III significantly enhances resolution while reducing false colours and moiré effect. This is much more effective than conventional low-pass filters.

## BUILT-IN DIGITAL LENS OPTIMIZER

The EOS-1D X Mark III's built-in Digital Lens Optimizer soundly corrects diffraction blur and optical aberrations based on the design values of compatible lenses to avoid compromising depth-of-field control and image quality degradation, allowing you to obtain top-notch quality images even without post-processing. The EOS-1D X Mark III also features an in-camera RAW image development with a stronger Digital Lens optimizer effect when needed.





EF24-70mm f/2.8L II USM  
1/500 sec  
Aperture f/11  
ISO 400



EF85mm f/1.4L IS USM  
1/400 sec  
Aperture f/1.6  
ISO 100



EF600mm f/4L IS III USM  
1/1250 sec  
Aperture f/4  
ISO 400



EF600mm f/4L IS III USM +2x III  
1/250 sec  
Aperture f/8  
ISO 40000



EF600mm f/4L IS III USM  
1/800 sec  
Aperture f/4  
ISO 12800

# MOVE BEYOND INTUITION

## ADVANCED CONTROLS

An innovative addition to the new EOS-1D X Mark III is a customisable smart controller that allows for swift and easy selection of your desired AF point by dragging your finger over the AF-ON button. Touch sensitivity of the button can be adjusted to change the speed of AF point movement according to your shooting needs. Additionally, intelligent design through a combination of well-placed dials, customisable multi-controllers and a fully touchscreen interface place even greater control in your hands to capture your prized shot.



## MADE FOR THE OUTDOORS

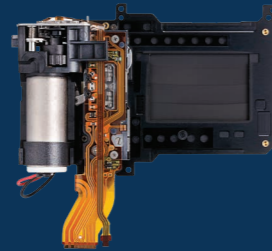
The EOS-1D X Mark III features a touchscreen LCD with approximately 2.1 million dots that ensure ample resolution for magnifying images, while the anti-reflective and scratch-resistant screen allow for easy preview of images even when outdoors. Viewfinder shooting is also comfortable with an approximately 20mm eye point for those wearing glasses, while key elements in the viewfinder are displayed in red for easy viewing in both day and night. When working in the dark, frequently-used buttons will be illuminated for easier navigation.



# BUILT FOR SOLIDITY

## DURABILITY OF APPROX. 500,000 CYCLES

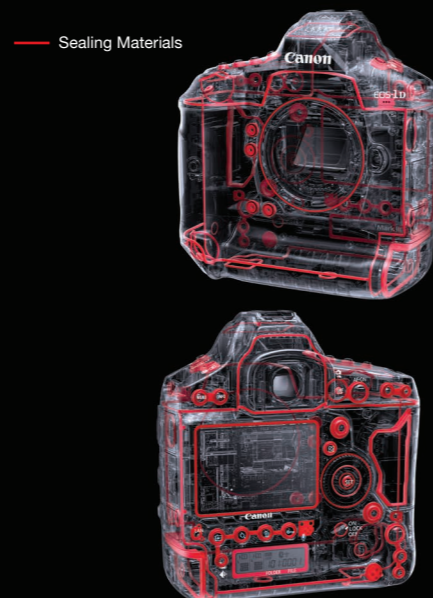
Designed to ensure mechanical strength for high-speed continuous shooting and smooth operations, the EOS-1D X Mark III is outfitted with a shutter mechanism durability of approximately 500,000 cycles. This is a notch above the EOS-1D X Mark II with a substantial increase in the number of shots, prolonging the longevity of camera performance.



## DUST- AND DRIP-RESISTANCE STRUCTURE

For professionals out on the front line, the EOS-1D X Mark III is the hardy and reliable camera needed to withstand unpredictable weather and terrain. Built with a sturdy magnesium alloy body complete with dust- and drip-resistance\* around critical areas, the EOS-1D X Mark III's robust camera system is ready to tough it out so you can travel worry-free on every assignment.

\*Dust- and drip-resistance may vary based on external conditions. Warranty exclusions apply.



## NETWORK COMPATIBLE

Sharing is a vital function for professional photographers to transfer, display, and post their images online. This includes establishing a stable network connection that operates without a hitch with the comfort of data security. The EOS-1D X Mark III comes with a network tab that makes it effortless for configuring the camera's built-in Wi-Fi (with FTP), wired LAN module, built-in GPS receiver for geotagging photos, and enduring security standards all under a sophisticated user interface. Professional users can depend upon the stability and operability in the EOS-1D X Mark III's enhanced Wi-Fi capabilities and Bluetooth Low Energy technology, deemed unrivalled amongst the EOS-1D series.

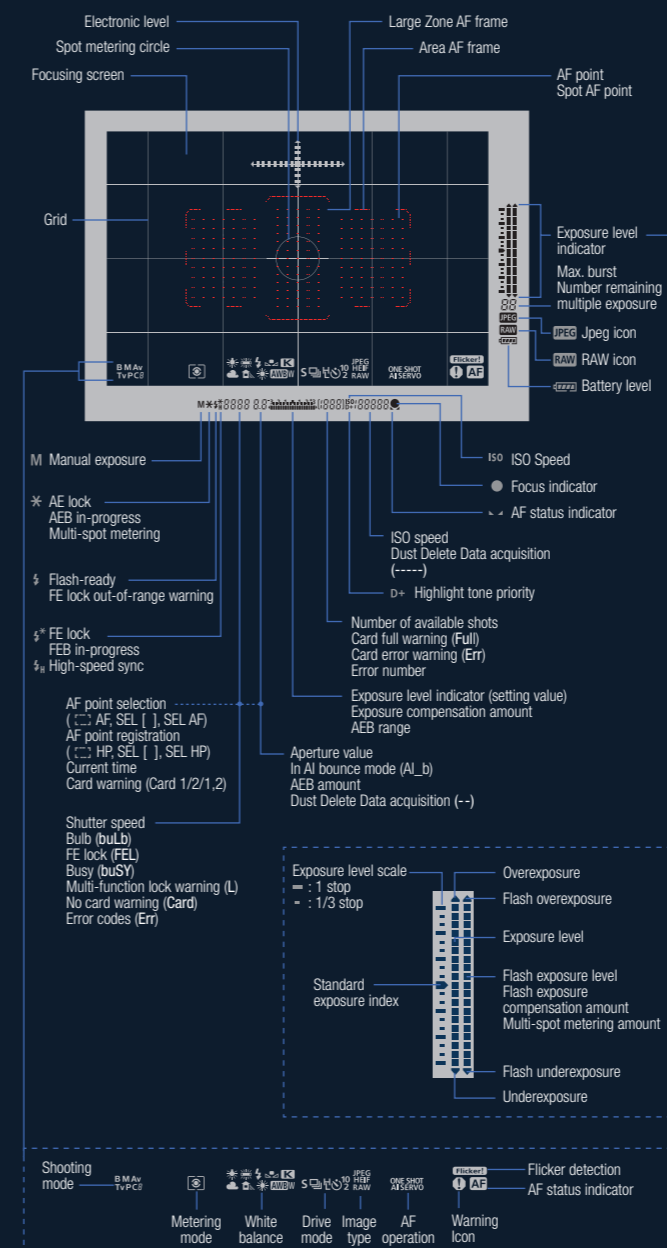


For immediate and quick transfer of large and high resolution CRAW or video files, the optional WFT-E9 wireless file transmitter offers faster and more stable and reliable connection than the built-in Wi-Fi connection.

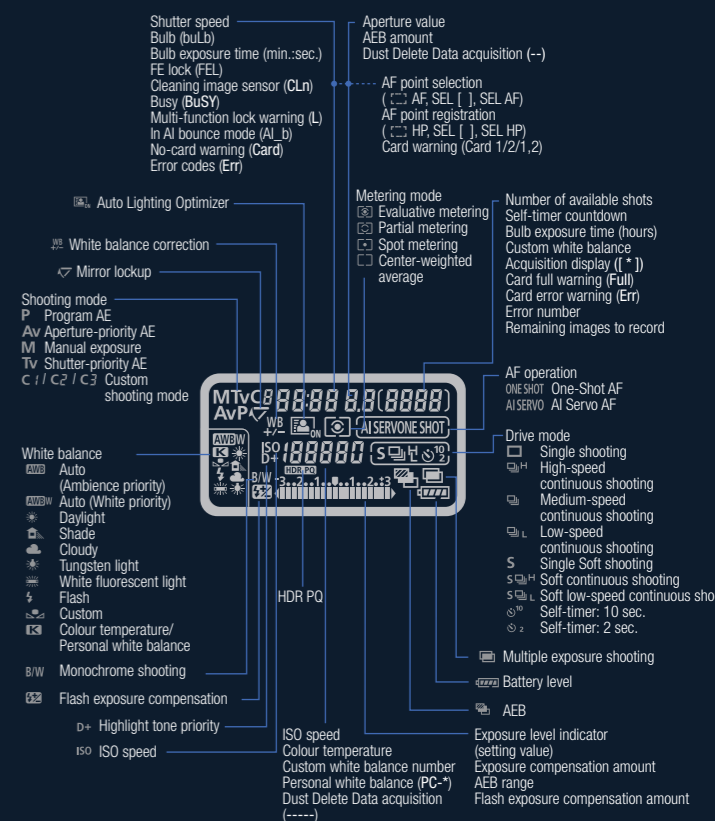
# NOMENCLATURE



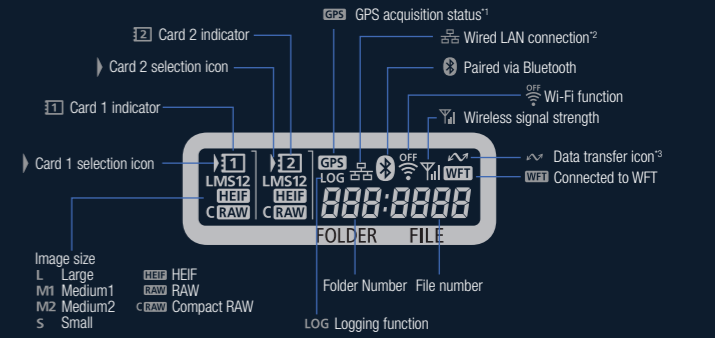
# VIEWFINDER INFORMATION



# TOP LCD PANEL



# REAR LCD PANEL



\*1 Appears when built-in GPS features are used. \*2 Appears when connected to a wired LAN. \*3 Appears when connected to a computer or smartphone.

# SPECIFICATIONS

TYPE	
Type	Digital single-lens reflex AF/AE camera
Recording media	CFexpress memory card <ul style="list-style-type: none"><li>Type B compatible: 2 card slots</li></ul>
Image sensor size	Approx. 35.9×23.9 mm
Compatible lenses	Canon EF lens product groups <ul style="list-style-type: none"><li>*Excluding EF-S and EF-M lenses</li></ul>
Lens mount	Canon EF mount

IMAGE SENSOR	
Type	CMOS sensor
Effective pixels	Approx. 20.1 megapixels <ul style="list-style-type: none"><li>*Rounded to the nearest 100,000.</li></ul>
Aspect ratio	3:2

RECORDING SYSTEM																	
Recording format	DCF 2.0																
Image type	JPEG (8-bit), HEIF (10-bit), RAW (14-bit Canon original) <ul style="list-style-type: none"><li>RAW+JPEG simultaneous recording possible</li> <li>RAW+HEIF simultaneous recording possible</li></ul>																
Pixels recorded	<table> <tbody><tr> <th>Image Quality</th> <th>Pixel Count</th></tr> <tr> <td rowspan="4">JPEG</td> <td>L</td> <td>Approx. 20.0 megapixels (5472×3648)</td></tr> <tr> <td>M1</td> <td>Approx. 12.7 megapixels (4368×2912)</td></tr> <tr> <td>M2</td> <td>Approx. 8.9 megapixels (3648×2432)</td></tr> <tr> <td>S</td> <td>Approx. 5.0 megapixels (2736×1824)</td></tr> <tr> <td rowspan="2">HEIF</td> <td>L</td> <td>Approx. 20.0 megapixels (5472×3648)</td></tr> <tr> <td>RAW</td> <td>Approx. 20.0 megapixels (5472×3648)</td></tr> </tbody></table> <ul style="list-style-type: none"><li>*Rounded to the nearest 100,000.</li></ul>	Image Quality	Pixel Count	JPEG	L	Approx. 20.0 megapixels (5472×3648)	M1	Approx. 12.7 megapixels (4368×2912)	M2	Approx. 8.9 megapixels (3648×2432)	S	Approx. 5.0 megapixels (2736×1824)	HEIF	L	Approx. 20.0 megapixels (5472×3648)	RAW	Approx. 20.0 megapixels (5472×3648)
Image Quality	Pixel Count																
JPEG	L	Approx. 20.0 megapixels (5472×3648)															
	M1	Approx. 12.7 megapixels (4368×2912)															
	M2	Approx. 8.9 megapixels (3648×2432)															
	S	Approx. 5.0 megapixels (2736×1824)															
HEIF	L	Approx. 20.0 megapixels (5472×3648)															
	RAW	Approx. 20.0 megapixels (5472×3648)															

IMAGE PROCESSING DURING SHOOTING	
Picture style	Auto, Standard, Portrait, Landscape, Fine Detail, Neutral, Faithful, Monochrome, User Defined 1–3
White balance	Auto (Ambience priority), Auto (White priority), Preset (Daylight, Shade, Cloudy, Tungsten light, White fluorescent light, Flash), Custom (5 settings), Colour temperature setting (approx. 2500–10000 K) <ul style="list-style-type: none"><li>White balance correction and bracketing available</li> <li>*Flash Colour temperature information transmission possible</li></ul>
Automatic image brightness correction	Auto Lighting Optimizer
Highlight tone priority	Available
Lens aberration correction	Peripheral illumination correction, Distortion correction, Digital Lens Optimizer, Chromatic aberration correction, Diffraction correction

VIEWFINDER	
Type	Eye-level pentaprism
Field of view (coverage)	Vertical/Horizontal approx. 100% (with eyepoint approx. 20 mm)
Magnification	Approx. 0.76× (−1 m <sup>−1</sup> with 50 mm lens at infinity)
Eyepoint	Approx. 20 mm (from eyepiece lens end at −1 m <sup>−1</sup> )
Dioptric adjustment range	Approx. −3.0 to +1.0 m <sup>−1</sup> (dpt)
Eyepiece shutter	Built-in
Focusing screen	Fixed

AUTOFOCUS (VIEWFINDER SHOOTING)	
Focus method	TTL secondary image-registration, phase-difference detection with the dedicated AF sensor
AF points	191 points max. (cross-type AF points: 155 points max.) <ul style="list-style-type: none"><li>*Number of available AF points, Dual cross-type AF points, and Cross-type AF points vary depending on the lens used.</li> <li>*Dual cross-type focusing at f/2.8 with center AF point</li></ul>
Focusing brightness range	EV −4 to 21 (with the center AF point supporting f/2.8, One-Shot AF, room temperature, ISO 100)
Focus operation	One-Shot AF, AI Servo AF, manual focusing (MF)
AF area selection mode	Spot AF (manual selection), 1-point AF (manual selection), AF point expansion (manual selection, vertical/horizontal), AF point expansion (manual selection: surround), Zone AF (manual selection of zone), Large zone AF (manual selection of zone), Auto selection AF
Subject detection AF	EOS ITR AF setting (can recognize colour information, faces, and heads) <ul style="list-style-type: none"><li>*ITR: Intelligent Tracking and Recognition</li></ul>
AI Servo AF characteristics	Tracking sensitivity, Acceleration/deceleration tracking
AF fine adjustment	AF Microadjustment (All lenses by the same amount, adjust by lens)

AUTOFOCUS (LIVE VIEW SHOOTING/MOVIE RECORDING)	
Focus method	Dual Pixel CMOS AF <ul style="list-style-type: none"><li>*AF not available in RAW or 4K 59.94p/50.00p (NTSC/PAL) movie recording</li></ul>
AF method	Face+Tracking, Spot AF, 1-point AF, Expand AF area (vertically/horizontally), Expand AF area: Around, Zone AF, Large Zone AF: Vertical, Large Zone AF: Horizontal
Available AF point positions	Max. 3869 <ul style="list-style-type: none"><li>*When selected with the Multi-controller</li></ul>
Available AF areas when automatically selected	Max. 525

Eye Detection AF	Available
Magnified view	Approx. 5×/10×
AF area	Horizontal: Approx. 90%, Vertical: Approx. 100% <ul style="list-style-type: none"><li>Horizontal: Approx. 80%, Vertical: Approx. 80%</li> <li>*Varies depending on the lens used</li></ul>
Manual focus (MF)	MF peaking, Focus guide

<span>[</span> Live View shooting <span>]</span>	
AF operation	One-Shot AF, Servo AF
Continuous AF	Available
Focusing brightness range	EV −6 to 18 (f/1.2, center AF point, at room temperature, ISO 100, One-Shot AF)
Servo AF characteristics	Tracking sensitivity, Acceleration/deceleration tracking

<span>[</span> Movie recording <span>]</span>	
Focusing brightness range	EV −4 to 18 (f/1.2, center AF point, at room temperature, ISO 100, One-Shot AF, 29.97 fps)
Movie Servo AF	Available
Movie Servo AF characteristics	Tracking sensitivity, AF speed

EXPOSURE CONTROL	
Metering mode	Viewfinder shooting: 216-zone (18×12) TTL open-aperture metering with an approx. 400,000-pixel RGB+IR metering sensor <ul style="list-style-type: none"><li>Live View shooting/movie recording: 384-zone (24×16) metering with signals from the image sensor</li></ul>
Metering mode	Viewfinder shooting: Evaluative metering, Partial metering (approx. 6.2% of screen), Spot metering* (approx. 1.5% of screen), Center-weighted average metering <ul style="list-style-type: none"><li>*Options include spot metering linked to AF points and multi-spot metering</li></ul> <div>Live View shooting: Evaluative metering, Partial metering (approx. 5.8% of screen), Spot metering (approx. 2.9% of screen)</div> <div>Movie recording: Center-weighted average metering, Evaluative metering</div> <ul style="list-style-type: none"><li>*Set automatically based on shooting conditions</li></ul>
Metering brightness range	Viewfinder shooting: EV 0 to 20 (at room temperature, ISO 100) <div>Live View shooting: EV −3 to 20 (at room temperature, ISO 100)</div> <div>Movie recording: EV −1 to 20 (at room temperature, ISO 100)</div>
Shooting mode	Still photo shooting: <ul style="list-style-type: none"><li>Program AE, Shutter-priority AE, Aperture-priority AE, Manual exposure, Bulb exposure, Custom shooting modes (C1/C2/C3)</li></ul> <div>Movie recording:</div> <ul style="list-style-type: none"><li>Program AE, Shutter-priority AE, Aperture-priority AE, Manual exposure, Custom shooting modes (C1/C2/C3)</li></ul>
ISO speed (recommended exposure index)	Still photo shooting: <div>ISO Auto, manually set within ISO 100–102400 (in 1/3- or 1-stop increments), expandable to L (ISO 50), H1 (ISO 204800), H2 (ISO 409600), or H3 (ISO 819200)</div> <ul style="list-style-type: none"><li>*ISO 200–102400 with Highlight tone priority set</li></ul> <div>Movie recording:</div> <ul style="list-style-type: none"><li>Program AE/Av/Tv: ISO Auto, expandable to H1 (ISO 204800)</li> <li>M: ISO Auto, manually set within ISO 100–25600 (in 1/3- or 1-stop increments), expandable to H1 (ISO 204800)</li> <li>*ISO 200–25600 with Highlight tone priority set</li></ul>
Exposure compensation	Manual: ±5 stops in 1/3- or 1/2-stop increments (viewfinder shooting), or ±3 stops in 1/3- or 1/2-stop increments (Live View shooting, movie recording) <ul style="list-style-type: none"><li>AEB: ±3 stops in 1/3- or 1/2-stop increments (can be combined with manual exposure compensation)</li></ul>
Flicker reduction	Available (viewfinder shooting)

MULTIPLE EXPOSURES	
Shooting method	Function/control priority, Continuous shooting priority
Number of multiple exposures	2 to 9 exposures
Multiple-exposure control	Additive, Average, Bright, Dark

HDR SHOOTING (STILL PHOTO HDR PQ)	
Recording format	HEIF
Bit depth	10-bit
Colour sampling	YCbCr 4:2:2
HDR specification	ITU-R BT.2100 (PQ)

SHUTTER	
Type	Electronically controlled, focal-plane shutter
Shutter mode	Viewfinder shooting: Mechanical <ul style="list-style-type: none"><li>Live View shooting: Mechanical, Electronic 1st-curtain, Electronic</li></ul>
Shutter speed	Mechanical/Electronic 1st-curtain set: 1/8000 sec. to 30 sec., Bulb <ul style="list-style-type: none"><li>Electronic set: 1/8000 sec. to 0.5 sec.</li> <li>Max. shutter speed with flash sync: 1/250 sec.</li> <li>*Setting range differs when recording movies</li></ul>

DRIVE SYSTEM	
Drive mode	Single shooting, High-speed continuous shooting, Medium-speed continuous shooting, Low-speed continuous shooting, Single Soft shooting, Soft continuous shooting, Soft low speed continuous shooting, Self-timer: 10 sec, Self-timer: 2 sec

Continuous shooting speed (AF/AE)	Drive Mode	Viewfinder Shooting	Live View Shooting <sup>2</sup>
	High-speed continuous shooting <sup>1</sup>	Max. approx. 16 shots/sec.	Max. approx. 20 shots/sec.
	Medium-speed continuous shooting	Approx. 10 shots/sec.	Approx. 10 shots/sec. <sup>3</sup>
	Low-speed continuous shooting	Approx. 3.0 shots/sec.	Approx. 3.0 shots/ sec.
	Soft continuous shooting	Approx. 8.0 shots/sec.	Approx. 10 shots/ sec. <sup>3</sup>
	Soft low speed continuous	Approx. 3.0 shots/sec.	Approx. 3.0 shots/ sec.

<sup>1</sup> May be lower depending on conditions such as shutter speed, aperture, state of aperture during continuous shooting, use of flash, use of flicker reduction, battery level, temperature, subject conditions, brightness (as when shooting under low light), type of lens, type of power, and if internal memory becomes full (which temporarily disables shooting).

<sup>2</sup> With the electronic shutter, continuous shooting speed is equivalent to the speed in high-speed continuous shooting.

<sup>3</sup> With the mechanical shutter, continuous shooting speed is approx. 8.0 shots/sec.

Maximum burst	JPEG Large: 1,000 shots or more <ul style="list-style-type: none"><li>HEIF Large: 1,000 shots or more</li> <li>RAW: 1,000 shots or more</li> <li>RAW+JPEG Large: 1,000 shots or more</li> <li>RAW+HEIF Large: approx. 350 shots</li></ul> <ul style="list-style-type: none"><li><sup>*</sup>In viewfinder shooting with a 325 GB card conforming to Canon testing standards</li> <li><sup>*</sup>Varies depending on shooting conditions (such as when JPEG/HEIF image quality is set to 8, as well as the subject, memory card brand, ISO speed, Picture Style, and Custom Functions)</li></ul>
---------------	--

EXTERNAL SPEEDLITE	
Compatible Speedlites	EL/EX series Speedlites
Flash metering	E-TTL II autofocus
Flash exposure compensation	±3 stops in 1/3- or 1/2-stop increments
FE lock	Available
PC terminal	Available
Flash control	Flash function settings, Flash Custom Function settings

MOVIE RECORDING	
Movie recording size & frame rate	RAW (5472×2886) <span> </span> : 59.94p/50.00p/29.97p/25.00p/24.00p/23.98p <ul style="list-style-type: none"><li>4K DCI (4096×2160)<span> </span>: 59.94p/50.00p/29.97p/25.00p/24.00p/23.98p</li> <li>4K DCI cropped (4096×2160)<span> </span>: 59.94p/50.00p/29.97p/25.00p/24.00p/23.98p</li> <li>4K UHD (3840×2160)<span> </span>: 59.94p/50.00p/29.97p/25.00p</li> <li>Full HD (1920×1080)<span> </span>: 119.9p/100.0p/59.94p/50.00p/29.97p/25.00p</li> <li>*119.9p/100.0p used for High Frame Rate movies</li></ul>
Compression method	ALL-I (For editing), IPB (Standard), IPB (Light)
Card performance requirements (writing/reading speed)	RAW: CFexpress 1.0 (330 MB/sec. or faster) <ul style="list-style-type: none"><li>4K DCI (ALL-I/IPB)/4K UHD (ALL-I/IPB)/Full HD (ALL-I/IPB/IPB (Light)): CFexpress 1.0</li></ul>
Time code	Can be added
Sound recording	Built-in monaural microphone; external stereo microphone terminal included, and line input supported <ul style="list-style-type: none"><li>Sound-recording level adjustable, wind filter provided, attenuator provided</li></ul>

Headphone	Headphone terminal provided, volume adjustable
Movie Digital IS	Available
Canon Log	Available as a shooting option
Still photo shooting	Not available during movie recording
HDMI output	Image output without information display available <ul style="list-style-type: none"><li>*4K output supported; Auto/1080p selectable</li></ul>

SCREEN	
Type	TFT colour, liquid-crystal monitor
Screen size and dots	Approx. 8.01 cm (3.15 in.) (3:2) with approx. 2.1 million dots
Touch-screen panel	Capacitive sensing

PLAYBACK	
Image display format	Without shooting information, with basic information, with detailed shooting information, index display (4/9/36/100 images)
Highlight alert	Overexposed highlights blink
Magnified view	Approx. 1.5×–10×, initial magnification and position settable
Voice memo	Recording and playback
Converting HEIF to JPEG	Available
In-camera RAW image processing	Brightness adjustment, White balance, Picture Style, Clarity, Auto Lighting Optimizer, High ISO speed noise reduction, Image quality, Colour space, Lens aberration correction (Peripheral illumination correction, Distortion correction, Digital Lens Optimizer, Chromatic aberration correction, Diffraction correction)
Print order	DPOF Version 1.1 compatible

• All data above is based on Canon testing standards and CIPA (Camera & Imaging Products Association) testing standards and guidelines.
• Dimensions and weight listed above are based on CIPA Guidelines (except weight for camera body only).
• Product specifications and appearance are subject to change without notice.
• If a problem occurs with a non-Canon lens attached to the camera, contact the respective lens manufacturer.

COMMUNICATION FUNCTIONS	
[Wi-Fi]	
Standards compliance	IEEE 802.11b/g/n
Transmission method	DS-SS modulation (IEEE 802.11b), OFDM modulation (IEEE 802.11g/n)
Transmission frequency (central frequency)	Frequency: 2412 to 2462 MHz <ul style="list-style-type: none"><li>Channels: 1–11</li></ul>
Connection method	Camera access point mode, infrastructure* <ul style="list-style-type: none"><li>*Wi-Fi Protected Setup supported</li></ul>
Security	Authentication method: Open system, Shared key, or WPA/WPA2-PSK <ul style="list-style-type: none"><li>Encryption: WEP, TKIP, AES</li></ul>
Compatible devices	Smartphone, computer, FTP server

[Wired LAN]	
Type	Ethernet
Standards compliance	IEEE 802.3u (10BASE-T/100BASE-TX/1000BASE-T)
Compatible devices	Access point, computer, EOS-1D X Mark III* <ul style="list-style-type: none"><li>*When syncing time between cameras</li></ul>

[Bluetooth]	
Standards compliance	Bluetooth Specification Version 4.2 compliant (Bluetooth low energy technology)
Transmission method	GFSK modulation
Compatible devices	Smartphone

GPS FEATURES	
Compatible satellites	GPS satellites (USA), GLONASS satellites (Russia), Quasi-Zenith Satellite System Michibiki (Japan)
Image geotagging	Latitude, longitude, elevation, Coordinated Universal Time (UTC), signal acquisition status
Log data	One file generated daily, NMEA format <ul style="list-style-type: none"><li>*Change of time zone creates a separate file</li> <li>*Log data in internal memory can be transferred to cards or imported to a computer as log files</li></ul>
Log data deletion	Available

CUSTOMIZATION FEATURES	
Custom Functions	38 functions
Custom Quick Control	Available
Saving camera settings	Up to 10 settings can be registered on a card
My Menu	Up to 5 screens can be registered
Copyright information	Text entry and appending possible
IPTC information	Can be added

INTERFACES	
Digital terminal	SuperSpeed Plus USB (USB 3.1 Gen 2) equivalent, USB Type-C Computer communication
HDMI mini OUT terminal	Type C (auto switching of resolution)
External microphone input/line input terminal	3.5 mm diameter stereo mini-jack <ul style="list-style-type: none"><li>Directional Stereo Microphone DM-E1, Stereo Microphone DM-E100, or commercially available external microphones can be connected</li></ul>
Headphone terminal	3.5 mm diameter stereo mini-jack
Remote control terminal	For N3-type remote control units
System extension terminal	Wireless File Transmitter WFT-E9 connection
Ethernet terminal	RJ-45 terminal

POWER	
Battery	Battery Pack LP-E19, quantity: 1 <ul style="list-style-type: none"><li>* AC power usable with household power outlet accessories</li></ul>
Number of available shots	Viewfinder shooting: <ul style="list-style-type: none"><li>Approx. 2850 shots at room temperature (+23°C/73°F), approx. 2360 shots at low temperatures (0°C/32°F)</li></ul> <div>Live View shooting:</div> <ul style="list-style-type: none"><li>Approx. 610 shots at room temperature (+23°C/73°F), approx. 530 shots at low temperatures (0°C/32°F)</li> <li>*With a fully charged Battery Pack LP-E19.</li></ul>
Movie recording time available	Total approx. 4 hr. 40 min. at room temperature (+23°C/73°F) <ul style="list-style-type: none"><li>Total approx. 4 hr. 10 min. at low temperatures (0°C/32°F)</li> <li>*Using a fully charged Battery Pack LP-E19 with Movie Servo AF disabled to record Full HD 29.97p/25.00p IPB (Standard)</li></ul>

DIMENSIONS AND WEIGHT	
Dimensions (W×H×D)	Approx. 158.0×167.6×82.6 mm/6.22×6.60×3.25 in.
Weight	Approx. 1440 g/50.80 oz. (including battery pack and card)/Approx. 1250 g/44.09 oz. (body only)

OPERATING ENVIRONMENT	
Working temperature range	0–45°C (32–113°F)
Working humidity	85% or less

# EOS-1D<sup>X</sup>

## Mark III

# Canon

Delighting You Always

**SOUTH & SOUTHEAST ASIA REGIONAL HEADQUARTERS**  
**CANON SINGAPORE PTE. LTD.**

1 Fusionopolis Place, #15-10 Galaxis, Singapore 138522 | <https://asia.canon>



CANON IMAGING ASIA



CANON ASIA



@CANONASIA

**SNAPSHOT**

[SNAPSHOT.CANON-ASIA.COM](https://snapshot.canon-asia.com)



Find out more

#### DISCLAIMERS

This document is for information only and the contents are subject to change without notice. Errors and omissions excepted. Images are simulated. Weight and dimensions are approximates. Nothing in this document should be construed as a warranty. Product/Service options, name and availability may vary by region. We expressly disclaim any liability or contractual obligations with respect to this document. Canon and Power Shot, among others are trademarks of Canon Inc. and/or its affiliates. Other names, marks and logos contained in this document may be the registered trademarks or trademarks of their respective owners.

0219W808